

# QCTH, QCTHL

# QUARTER-TURN CLAMPS



★Key Point  
Easy-to-read ON/OFF position



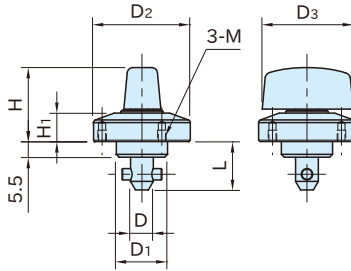
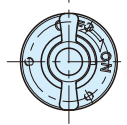
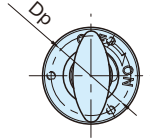
**QCTH**  
(Plastic knob)



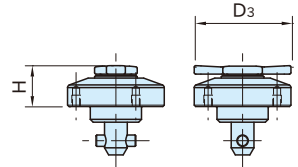
**QCTH-S**  
(Metal knob)



**QCTHL-S**  
(Low-height knob)



**QCTH** (Plastic knob) **QCTH-S** (Metal knob)



**QCTHL-S** (Low-height knob)

Type	Body/Shank	Pin	Knob	Spring
<b>QCTH</b>	S45C steel Electroless nickel plated	SUS303 stainless steel	Polyamide (glass-fiber reinforced) Black	Equivalent to SWOSC-V steel
<b>QCTH-S</b>			SCS13 stainless steel	
<b>QCTHL-S</b>			(Equivalent to SUS304)	

Part Number	Proper Plate Thickness	D ( $\pm 0.04$ )	D <sub>1</sub> (h9)	D <sub>2</sub>	L	H <sub>1</sub>	M	D <sub>p</sub>	Clamping Force (N)	Proper Cam Receptacles	
<b>QCTH</b>	<b>0525-10</b>	6~10	5	14	25	15.5	6.5	M2x0.4 3-deep	21	60	QCTH0525-N, QCTH0525-B
<b>QCTH-S</b>	<b>0834-14</b>	6~14	8	18	34	17	10	M3x0.5 4-deep	28	90	QCTH0834-N, QCTH0834-B
<b>QCTHL-S</b>	<b>0834-20</b>	12~20				23					

<b>QCTH</b> (Plastic knob)				<b>QCTH-S</b> (Metal knob)				<b>QCTHL-S</b> (Low-height knob)			
Part Number	D <sub>3</sub>	H	Weight (g)	Part Number	D <sub>3</sub>	H	Weight (g)	Part Number	D <sub>3</sub>	H	Weight (g)
<b>QCTH0525-10</b>	20	19	35	<b>QCTH0525-10S</b>	20	19	40	<b>QCTHL0525-10S</b>	25	11.5	35
<b>QCTH0834-14</b>	32	26	105	<b>QCTH0834-14S</b>	32	25.5	130	<b>QCTHL0834-14S</b>	34	15	80
<b>QCTH0834-20</b>			110	<b>QCTH0834-20S</b>			135	<b>QCTHL0834-20S</b>			85

### Furnished With

- **QCTH** **QCTH-S** **QCTHL-S** 0525-10 : 3 of socket-head cap screws, M2x0.4-5L
- **QCTH** **QCTH-S** **QCTHL-S** 0834-14, 0834-20 : 3 of socket-head cap screws, M3x0.5-6L