

NIP,NIPA,NIPS,NIP-SUS

IDLE PULLEYS



Stainless Steel

Electroless Nickel Plated



NIP
(Plastic)



NIPA
(Aluminum)

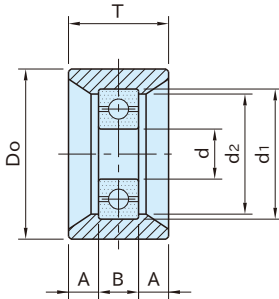


NIPS
(Steel)

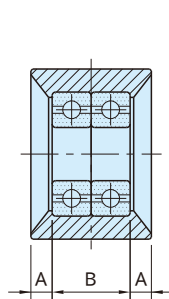


NIP-SUS
(Stainless Steel)

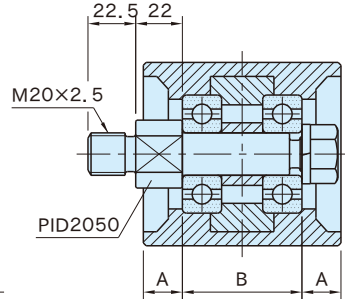
Type	Body	Bearing	Retaining Ring
NIP	Glass-fiber reinforced polyamide plastic Black	Steel	-
NIPA	A5052 Anodized finish Natural		Steel
NIPS	Steel (S45C) Electroless nickel plated finish		Steel
NIP-SUS	SUS303	Stainless steel	Stainless steel



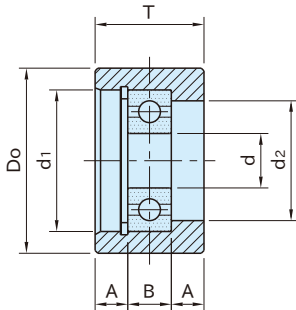
NIP 0825~2550 (Plastic)



NIP 3050~5560 (Plastic)



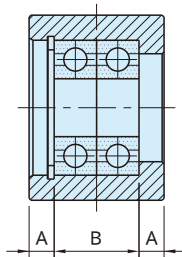
NIP 6065,8080 (Plastic)



NIPA 1535~2550 (Aluminum)

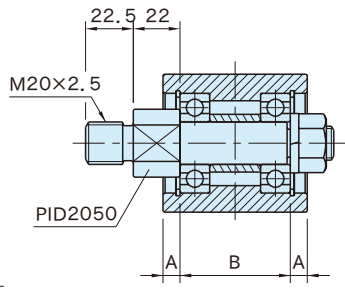
NIPS 1535~2550 (Steel)

NIP-SUS 1535,2045 (Stainless Steel)



NIPA 3050~5560 (Aluminum)

NIPS 3050~5560 (Steel)



NIPA 6065 (Aluminum)

NIPS 6065 (Steel)