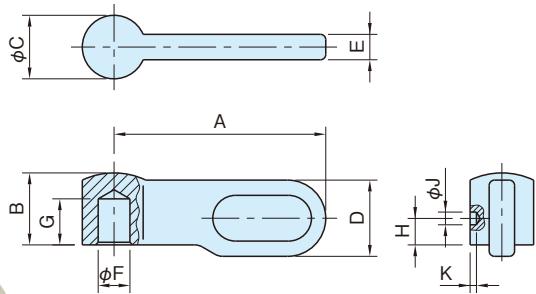


**LB****LOCKING WING NUTS****ROHS SUS****Body**

Stainless steel (SCS13 equivalent to SUS304)

Part Number	A	B	C	D	E	F (H7)	G	H	J	K	Weight (g)
<b>LB30R-SUS</b>	30	10.2	9	10.8	3.6	5	6.5	4	2	1	9.1
<b>LB40R-SUS</b>	40	13.6	12	14.4	4.8	6	8.7	5	2	1	22.2
<b>LB50R-SUS</b>	50	17	15	18	6	8	10.2	6	3	1	43

- A prepared hole is provided on the side of the hub for setscrew-hole machining.