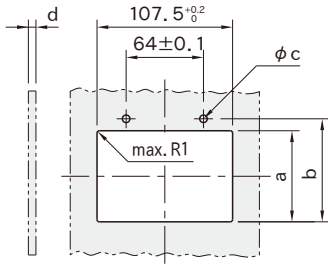


Mounting Cutout

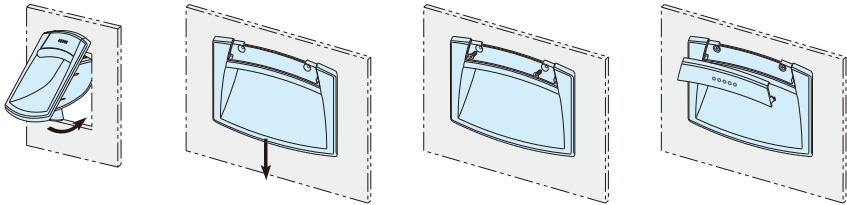


| d(Panel Thickness) | a (+ ^{0.5} ₀) | b (±0.1) | c (±0.02) |
|--------------------|------------------------------------|----------|-----------|
| Over 1 to 1.2 | 73 | 76.8 | 2.5 |
| Over 1.2 to 1.5 | | 77 | 2.55 |
| Over 1.5 to 2 | | 77.2 | 2.6 |
| Over 2 to 2.5 | 74 | 77.5 | 2.65 |
| Over 2.5 to 3 | | 77.8 | |
| Over 3 to 3.5 | | 78.1 | |
| Over 3.5 to 4 | 75 | 78.4 | 2.7 |
| Over 4 to 4.5 | | 78.7 | |
| Over 4.5 to 5 | | 79 | |

Deburr the edges before installing a handle.

When installing on a panel of thickness over 2.5mm, use an electric screwdriver to tighten self-tapping screws. If you do not use an electric screwdriver, provide M3 tapped holes in the panel to use M3x6 countersunk flat head screws, or drill 3.2mm-dia. holes to use M3x10 countersunk head screws and nuts.

Installation Instructions



1. Set the handle's upper rear part into the cutout, and then push in its lower part.
2. Press down the handle lightly.
3. Tighten two self-tapping screws.
4. Install a cover cap by pressing first on the ends and then on the central part.

Ordering Example

EFPH120SC- BR

Part Number

Color Code

| Color Code | Cover-Cap Color |
|------------|-----------------|
| OG | Orange |
| GR | Gray |
| YE | Yellow |
| LB | Light blue |
| BR | Black |
| RE | Red |



Orange



Gray



Yellow



Light blue



Black



Red