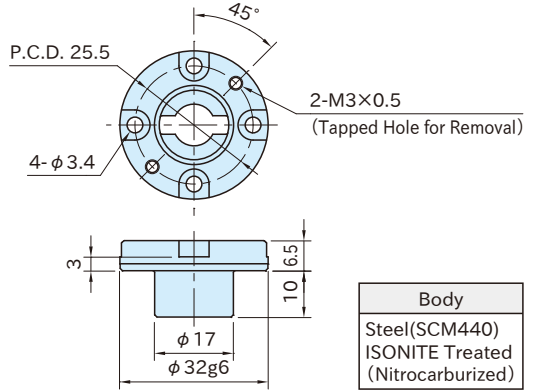


CP727

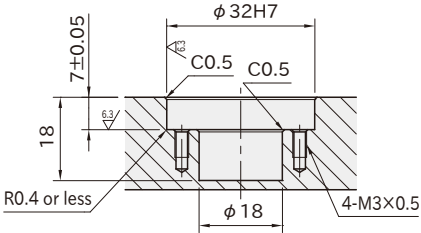
ONE-TOUCH FLEX LOCATOR BUSHING



Part Number	Weight (g)
CP727-0840R	32

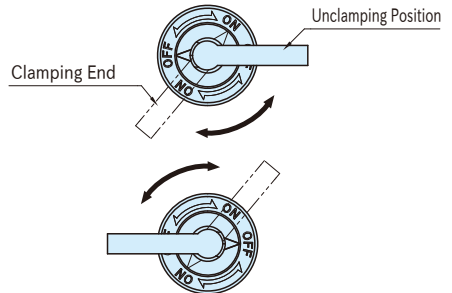
How To Use

■ Mounting Hole Dimensions

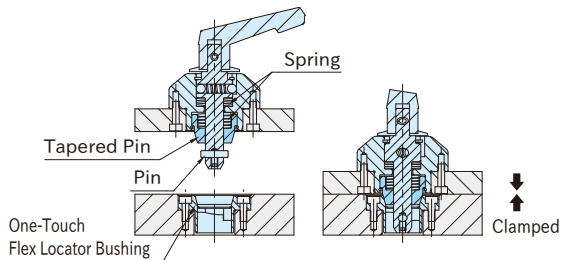
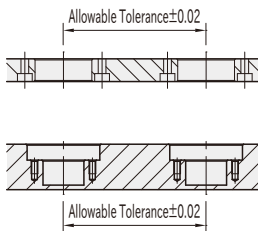


Features:

Two pair of unclamping and clamping end positions of handle can be chosen.



■ Spacing Tolerance



Reference

- Mechanism of FLEX LOCATORS
- How To Use ONE-TOUCH FLEX LOCATORS

- The plates are located by fitting of the tapered parts.
- The pin contacts the cam surface inside the One-Touch Flex Locator Bushing, and it compresses the inner spring, then the plates are clamped.
- *) No locating function with CP722-0840R-06N