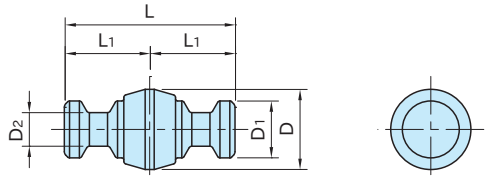


CP158

DOUBLE TAPERED CLAMPING PINS



Body
SCM435 steel
Quenched and tempered
Black oxide finished

Part Number	D	L	D ₁	D ₂	L ₁	Weight (g)
CP158-08001	15.5	33	11	6.5	16.5	24
CP158-12001	24.5	50	16	9.5	25	85
CP158-16001	31.5	66	21	13	33	190

How To Use

Can be used as a coupling for **CP151** Clamping Module (Double).
 <Locating Repeatability is 0.2>

