

CP157

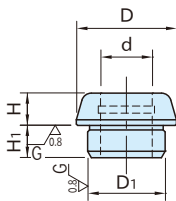
TAPERED BUSHINGS



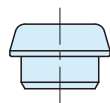
CP157-L
(Accurate)



CP157-S
(Standard)



CP157-L
(Accurate)



CP157-S
(Standard)

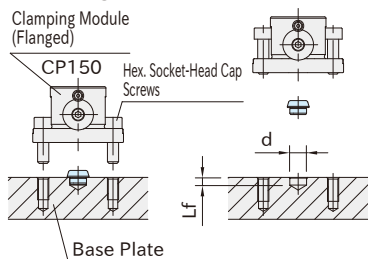
Part Number	D	H	D ₁	H ₁	d	Weight (g)
CP157-08001L	15.5	5	12	5	8	6
CP157-12001L	24.5	8	18	6	12	24
CP157-16001L	31.5	10	22	7.5	16	45
CP157-08001S	15.5	5	12	5	-	11
CP157-12001S	24.5	8	18	6	-	37
CP157-16001S	31.5	10	22	7.5	-	75

Type	Body
CP157-L	S45C steel Black oxide finished Precision ground
CP157-S	S45C steel Black oxide finished

How To Use

- Can be used for mounting **CP150** Clamping Module (Flanged) on the base plate.
- Use Accurate Type for precise locating of a clamping module.
- Use Standard Type for rough locating of a clamping module.

Mounting-Hole Dimensions



Size	d (H7)	Lf
CP157 08001	12	5.5
CP157 12001	18	6.5
CP157 16001	22	8

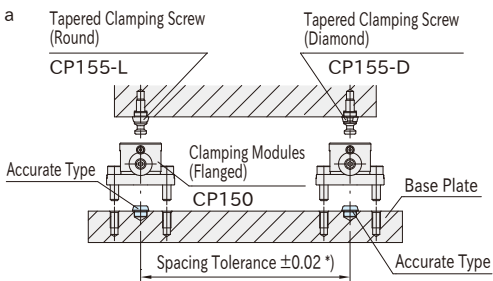
Note: The tolerance of dimension "d" for Standard Type should be $^{+0.1}_0$.

Related Products

- **CP150** Clamping Modules (Flanged)
- **CP155-L** Tapered Clamping Screws (Round)
- **CP155-D** Tapered Clamping Screws (Diamond)
- **CP156** Clamping Screws

Spacing Tolerance

Spacing tolerance for Accurate Type should be ± 0.02 .
*) Spacing tolerance for Standard Type should be ± 0.1 .



Application Example

