

CAG1

CASTORS (G1 Series)



Original ELESA Model RE.G1



CAG1-PBL

(Fixed Bracket)



CAG1-SBF

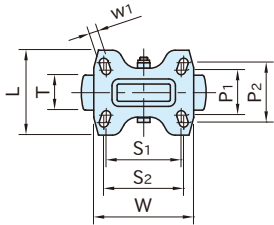
(Swivel Bracket with Brake)



CAG1-FBL

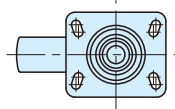
(Swivel Bracket with Through Hole)

Wheel Covering	Wheel	Bearing	Bracket
Thermoplastic elastomer(anti-trace) Shore A85 Gray	Polypropylene Light gray	Steel (Tube) Zinc plated	Steel Zinc plated



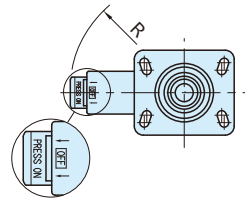
CAG1-PBL

(Fixed Bracket)



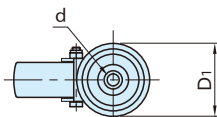
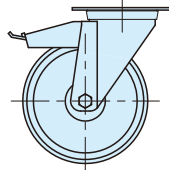
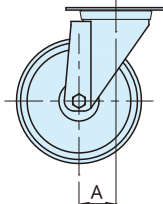
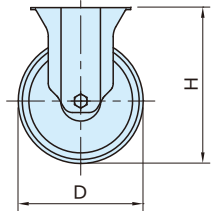
CAG1-SBL

(Swivel Bracket)



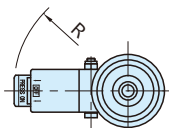
CAG1-SBF

(Swivel Bracket with Brake)



CAG1-FBL

(Swivel Bracket with Through Hole)



CAG1-FBF

(Swivel Bracket with Through Hole & Brake)

