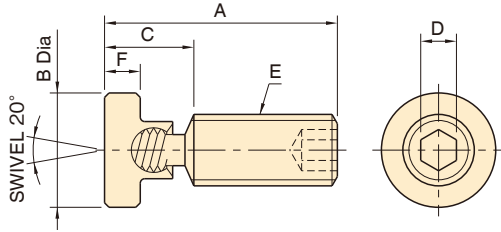


BJ736-B

SWIVEL SCREW CLAMPS, Type B



[Body]

Material : SCM435 steel

Heat Treat : Quenched and tempered

Finish : Black oxide finish

[Foot]

Material : SUM24L steel

Finish : Black oxide finish

Part Number	A	B	C	D	E	F	Allowable Screw Torque T (N·m)	Clamping Force $F=T/0.2d$ (N)	Weight (g)
BJ736-06015B	18	10	10	3	M 6x1	3	2.5	2,100	6
BJ736-06020B	23								7
BJ736-06025B	28								8
BJ736-06040B	43								12
BJ736-08020B	22	13	11	4	M 8x1.25	4	6.5	4,100	10
BJ736-08025B	27								12
BJ736-08040B	42								17
BJ736-08050B	52								22
BJ736-10020B	23	14	13	5	M10x1.5	5	13	6,500	19
BJ736-10025B	28								21
BJ736-10040B	43								31
BJ736-10050B	53								35
BJ736-10075B	78	19	14	6	M12x1.75	5	15.4	6,400	51
BJ736-12040B	42								44
BJ736-12050B	52								54
BJ736-12075B	77								74
BJ736-12100B	102	24	17	8	M16x2	6	50	15,600	99
BJ736-16050B	51								100
BJ736-16075B	76								125
BJ736-16100B	101								165
BJ736-16125B	126								205

Note:

Feet have lefthand threads to positively prevent backout when turning the screw counterclockwise.