

# BJ330

# SCREW JACKS



[Body]

Material : S45C steel

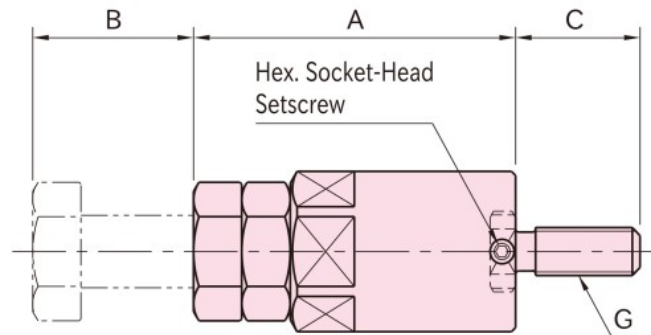
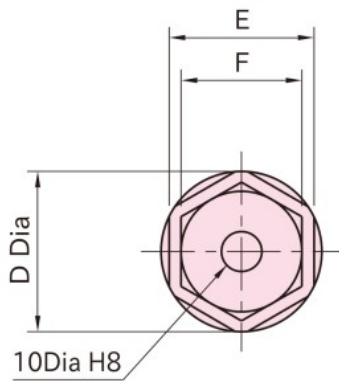
Finish : Black oxide

[Bolt]

Material : SCM435 steel

Heat treat : Quenched and tempered

Finish : Black oxide



Part Number	A	B	C	D	E	F	G	Load Capacity (N)	Weight (g)
<b>BJ330-12040</b>	40	10	30	40	36	30	M12x1.75	31,800	350
<b>BJ330-12050</b>	50	20							420
<b>BJ330-12070</b>	70	40		570					
<b>BJ330-12100</b>	100	50		1,350					
<b>BJ330-12150</b>	150	100		2,100					
<b>BJ330-16040</b>	40	10	30	40	36	30	M16x2	31,800	360
<b>BJ330-16050</b>	50	20							430
<b>BJ330-16070</b>	70	40		580					
<b>BJ330-16100</b>	100	50		1,360					
<b>BJ330-16150</b>	150	100		2,110					

### Feature:

A radius Screw-Jack Tip is available. Use with Riser Cylinders for additional height.

### How To Use

