

Small Capacity Fine Fog Nozzles Polypropylene, BIM-PP – Liquid Pressure Type –

BIM-PP

Features

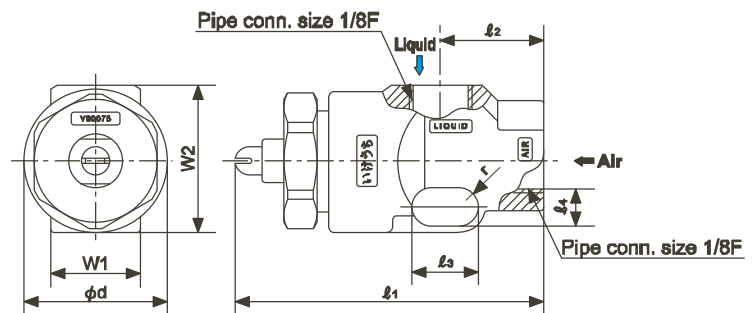
- Excellent chemical resistance with Polypropylene construction.
- Two types, BIMV (flat spray type) and BIMJ (full cone spray type) are available.
- Liquid pressure type with approx. 0.1 to 0.3MPa.



Applications

- Spraying: Deodorant, germicide, disinfectant, etc.
- Moisture control: Paper, textile, printing, etc.
- Cleaning: Printed circuit boards, electrical components, etc.

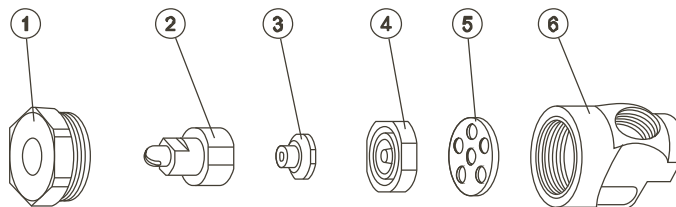
Dimensions & Pipe Conn. Sizes



■ Dimensions

Type	Nozzle No.	Dimensions (mm)								Mass (g)
		l ₁	l ₂	l ₃	l ₄	φd	r	W1	W2	
BIMV (flat spray)	BIMV80075	47.5	16	10	5	22	2.5	14	23	10
BIMJ (full cone spray)	BIMJ2004	46.7								

Structure & Materials



■ Components and materials

No.	Component	Standard Material
①	Cap	PP
②	Spray Tip	PP
③	Core	PP
④	Orifice	PP
⑤	Packing	PTFE
⑥	Adaptor	PP

Characteristics of the flat spray nozzle BIMV80075PP are equivalent to BIMV80075 on [pages 13 and 14](#).
Characteristics of the full cone spray nozzle BIMJ2004PP are equivalent to BIMJ2004 on [pages 21 and 22](#).

How to order

Please inquire or order for a specific nozzle using this coding system.

For flat spray nozzle

BIMV 80075 PP + TPP-IN

For full cone spray nozzle

BIMJ 2004 PP + TPP-IN