

Soldering Tools

SOLDERING FUME EXTRACTOR EXC -800



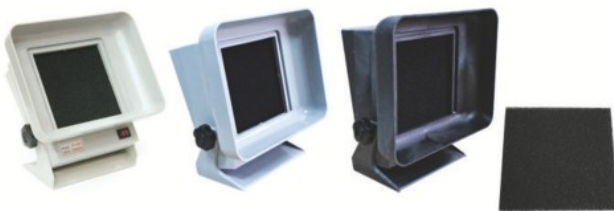
	EXC-800 Tube
Tube Length	50mm X 1.2m
Nozzle	50 mm silica gel, Aluminum alloy square shape

[Main filter] EXC-800-M [Prefilter] EXC-800-P

Model No.	Air Inlet	Rated Voltage	Power Consumption	Suction Amount	Suction Power	Noise	Tube Length	Size	Weight
EXC-800	Open Type	AC 220V	35/60/80W	75/100/110m ³ /h	0.3μm99.97%	<52/57/59dB	1.2m	300 X 270 X 300	4.3kg

- With 3 different air flow speeds to select;
- Two options for operation: with the duct or without the duct.
- Lightweight and compact design; save space and easy to move
- The adoption of glass fiber as the filter ensures the filtering efficiency as high as above 99.97%. It can filter over 80 kinds of viruses, bacteria, parasites, microbes, etc.
- Brushless motor ensures high speed with low noise, stable performance, long life time, and low power consumption;
- When the filter gets saturated, the built-in buzzer will give sound and light alarms in time, which reminds the operator to replace the filter immediately.
- Its pre-filter cotton is 5-15 times better than the other ordinary pre-filter cotton, in terms of life span and the filtering volume. Besides, it can filter effectively the particles as large as over 10μm.
- Its activated carbon filter is 10 times more efficient than the other ordinary activated carbon filter. It can effectively purify the toxic and harmful gases in the air, such as formaldehyde, benzene, ammonia, radon gas, sulfur dioxide, etc.

SMOKE ABSORBER JY-SA1 / JY-SA2 / JY-SA2 ESD / JY-SA2-F



- High performance fan and use the filter with refined activated carbon having a high absorbing performance.
- Fully adjustable fan and easy to replace the filter.

Model No.	JY-SA1	JY-SA2	JY-SA2 ESD
Voltage	110V 50/60Hz	220V 50/60Hz	220V 50/60Hz
Maximum Air Volume	105~126CFM	105~126CFM	105~126CFM
Weight	1.1kg	1.2kg	1.2kg

SMOKE ABSORBER JY-SA20(Air Blower)



- For production line

Model No.	JY-SA20
Voltage	220V
Power Consumption	23W
Current	0.19A
Maximum Air Flow	1.35m ³ /min
Maximum Voltage	14.90mmH ₂ O