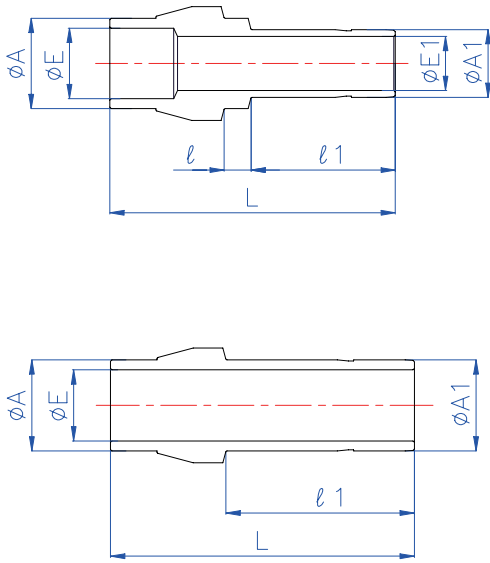
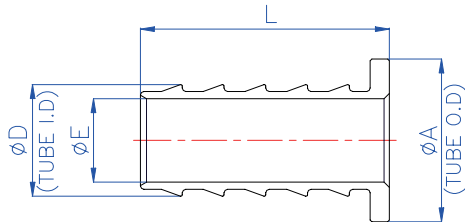


BI-LoK	DPC-M	Port Connector Connects metric BI-LOK Port to metric (or fractional) BI-LOK Port
---------------	--------------	--



Part No.	A	A ₁		E	E ₁	ℓ	ℓ_1	L
	mm	in	mm	mm	mm	mm	mm	mm
DPC 3M-3M	3		3	1.5	1.5	-	16.4	24.5
DPC 4M-3M	4		3	2.5	1.5	2.9	16.4	28.0
DPC 4M-4M	4		4	2.5	2.5	-	17.3	26.0
DPC 6M-3M	6		3	4.0	1.5	3.6	16.4	28.6
DPC 6M-4M	6		4	4.0	2.5	3.6	17.3	29.4
DPC 6M-6M	6		6	4.0	4.0	-	19.0	27.5
DPC 8M-6M	8		6	6.4	4.0	3.7	19.0	31.5
DPC 8M-8M	8		8	6.4	6.4	-	20.2	29.0
DPC 10M-6	10	3/8	9.5	8.0	7.6	3.9	20.3	33.0
DPC 10M-6M	10		6	8.0	4.0	3.9	19.0	31.7
DPC 10M-10M	10		10	8.0	8.0	-	21.2	30.0
DPC 12M-6M	12		6	9.5	4.0	3.8	19.0	38.6
DPC 12M-8M	12		8	9.5	6.4	3.8	20.2	39.8
DPC 12M-10M	12		10	9.5	8.0	3.8	21.2	40.8
DPC 12M-12M	12		12	9.5	9.5	-	26.7	42.5
DPC 16M-12M	16		12	13.0	9.5	3.7	26.7	47.8
DPC 16M-16M	16		16	13.0	13.0	-	28.7	46.1

BI-LoK	DTI	Insert (Saw type) for metric tube	DTIP	Insert (Plain type) for metric tube
---------------	------------	--------------------------------------	-------------	--



SAW

Part No.	A	D	E	L
	mm	mm	mm	mm
DTI 6M-4M	6	4	2.8	11.9
DTI 8M-6M	8	6	4.4	14.3
DTI 10M-8M	10	8	6.4	14.3
DTI 12M-8M	12	8	6.4	19.1
DTI 12M-10M	12	10	8.3	19.1
DTI 16M-14M	16	14	12.2	21.8
DTI 18M-12M	18	12	10.3	21.8
DTI 19M-16M	19	16	14.3	21.8

PLAIN

Part No.	A	D	E	L
	mm	mm	mm	mm
DTIP 4M-2M	4	2	1.0	14.0
DTIP 6M-4M	6	4	3.0	15.4
DTIP 8M-6M	8	6	5.0	16.2
DTIP 10M-8M	10	8	7.0	17.2
DTIP 12M-9M	12	9	8.0	22.8
DTIP 12M-10M	12	10	9.0	22.8
DTIP 16M-12M	16	12	10.5	24.4
DTIP 16M-13M	16	13	10.5	24.4
DTIP 16M-14M	16	14	11.0	26.0
DTIP 18M-15M	18	15	13.5	24.4
DTIP 19M-15M	19	15	13.5	24.4
DTIP 20M-18M	20	18	16.5	24.4
DTIP 25M-22M	25	22	20.5	24.0

