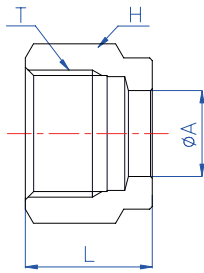
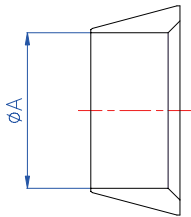


BI-LoK	DNA	Nut Fractional tube
---------------	------------	--------------------------------



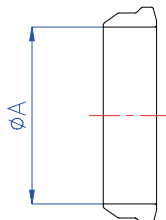
Part No.	A (Tube O. D)		H (HEX)		L mm	T (Straight thread)
	in	mm	in	mm		
DNA 1	1/16	1.59	5/16	7.94	8.0	10-32UNF
DNA 2	1/8	3.18	7/16	11.11	11.9	5/16-20UN
DNA 3	3/16	4.76	1/2	12.7	11.9	3/8-20UN
DNA 4	1/4	6.35	9/16	14.29	12.7	7/16-20UNF
DNA 5	5/16	7.94	5/8	15.88	13.5	1/2-20UNF
DNA 6	3/8	9.53	11/16	17.46	14.2	9/16-20UN
DNA 8	1/2	12.7	7/8	22.23	17.5	3/4-20UNEF
DNA 10	5/8	15.88	1	25.4	17.5	7/8-20UNEF
DNA 12	3/4	19.05	1-1/8	28.58	17.5	1-20UNEF
DNA 14	7/8	22.23	1-1/4	31.75	17.5	1-1/8-20UN
DNA 16	1	25.4	1-1/2	38.1	20.6	1-5/16-20UN

BI-LoK	DOF	Front Ferrule Fractional tube
---------------	------------	--



Part No.	A (Tube O. D)	
	in	mm
DOF 1	1/16	1.59
DOF 2	1/8	3.18
DOF 3	3/16	4.76
DOF 4	1/4	6.35
DOF 5	5/16	7.94
DOF 6	3/8	9.53
DOF 8	1/2	12.7
DOF 10	5/8	15.88
DOF 12	3/4	19.05
DOF 14	7/8	22.23
DOF 16	1	25.4

BI-LoK	DOB	Back Ferrule Fractional tube
---------------	------------	---



Part No.	A (Tube O. D)	
	in	mm
DOB 1	1/16	1.59
DOB 2	1/8	3.18
DOB 3	3/16	4.76
DOB 4	1/4	6.35
DOB 5	5/16	7.94
DOB 6	3/8	9.53
DOB 8	1/2	12.7
DOB 10	5/8	15.88
DOB 12	3/4	19.05
DOB 14	7/8	22.23
DOB 16	1	25.4