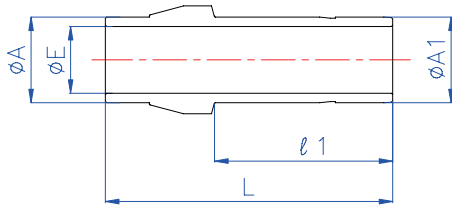
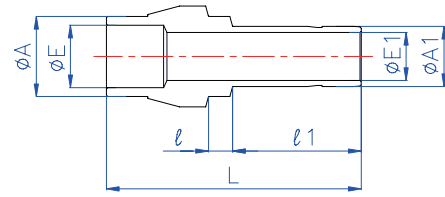


BI-LoK	D P C	Port Connector Connects to fractional BI-LOK Port
---------------	--------------	---



Straight type



Reducing type

Part No.	A (Tube O. D.)		A ₁ (Tube O. D.)		E	E ₁	L	ℓ ₁	ℓ
	in	mm	in	mm	mm	mm	mm	mm	mm
DPC 1-1	1/16	1.59	1/16	1.59	0.6	0.6	15.4	10.0	–
DPC 2-1	1/8	3.18	1/16	1.59	2.1	0.6	21.0	10.0	2.8
DPC 2-2	1/8	3.18	1/8	3.18	2.1	2.1	24.6	16.3	–
DPC 4-1	1/4	6.35	1/16	1.59	4.8	0.6	22.4	10.0	3.6
DPC 4-2	1/4	6.35	1/8	3.18	4.8	2.1	28.7	16.3	3.6
DPC 4-4	1/4	6.35	1/4	6.35	4.8	4.8	27.7	18.8	–
DPC 5-5	5/16	7.94	5/16	7.94	6.3	6.3	28.9	20.0	–
DPC 6-4	3/8	9.53	1/4	6.35	7.6	4.8	31.5	18.8	3.6
DPC 6-6	3/8	9.53	3/8	9.53	7.6	7.6	29.5	20.3	–
DPC 8-4	1/2	12.7	1/4	6.35	9.9	4.8	38.7	18.8	3.8
DPC 8-6	1/2	12.7	3/8	9.53	9.9	7.6	40.2	20.3	3.8
DPC 8-8	1/2	12.7	1/2	12.7	9.9	9.9	42.4	26.2	–
DPC 10-10	5/8	15.88	5/8	15.88	12.7	12.7	45.8	27.7	–
DPC 12-6	3/4	19.05	3/8	9.53	15.0	7.6	42.2	20.3	3.8
DPC 12-8	3/4	19.05	1/2	12.7	15.0	9.9	45.0	23.1	3.8
DPC 12-12	3/4	19.05	3/4	19.05	15.0	15.0	45.8	27.7	–
DPC 16-16	1	25.4	1	25.4	20.1	20.1	58.0	36.0	–

BI-LoK	D P C	Port Connector Connects fractional BI-LOK Port to metric BI-LOK Port
---------------	--------------	--

Part No.	A (Tube O. D.)		A ₁ (Tube O. D.)	E	E ₁	L	ℓ ₁	ℓ
	in	mm	mm	mm	mm	mm	mm	mm
DPC 4-6M	1/4	6.35	6	4.8	4.0	31.4	19.0	3.6