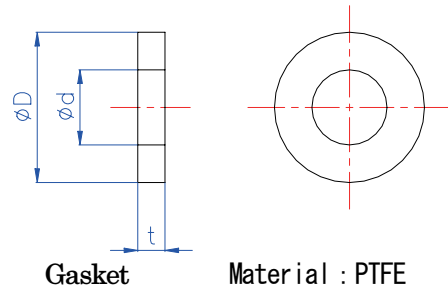
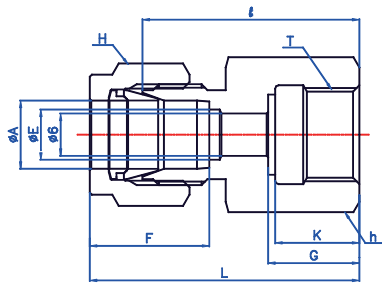


<b>BI-LoK</b>	<b>DGA</b>	<b>Gauge Connector</b> Connects fractional tube to ISO parallel thread
---------------	------------	---

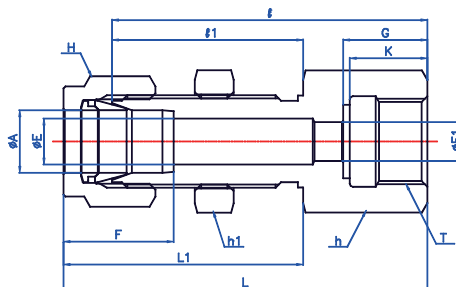


Part No.	T	D	d	t
KP-F-01	G1/4	11	5.5	2
KP-F-02	G3/8	14	5.5	2
KP-F-03	G1/2	18	5.5	2

H : See dimensional data(Last page)

Part No.	A(Tube O. D)		T	E	h(HEX)		ℓ	L	G	F	K
	in	mm	G	mm	in	mm	mm	mm	mm	mm	mm
DGA 2-G2	1/8	3.18	1/8	2.3	9/16	14.29	28.7	35.4	13.0	12.0	12.0
DGA 2-G4	1/8	3.18	1/4	2.3	3/4	19.05	30.7	37.4	13.0	14.0	12.0
DGA 4-G2	1/4	6.35	1/8	4.8	9/16	14.29	30.3	37.8	13.0	12.0	12.0
DGA 4-G4	1/4	6.35	1/4	4.8	3/4	19.05	32.1	39.6	13.0	14.0	12.0
DGA 4-G6	1/4	6.35	3/8	4.8	7/8	22.23	34.1	41.6	15.0	16.0	14.0
DGA 4-G8	1/4	6.35	1/2	4.8	1-1/16	26.99	36.1	43.6	17.0	18.0	16.0
DGA 6-G2	3/8	9.53	1/8	7.1	5/8	15.88	29.0	36.5	13.0	12.0	12.0
DGA 6-G4	3/8	9.53	1/4	7.1	3/4	19.05	30.9	38.4	13.0	14.0	12.0
DGA 6-G6	3/8	9.53	3/8	7.1	7/8	22.23	32.7	40.2	15.0	16.0	14.0
DGA 6-G8	3/8	9.53	1/2	7.1	1-1/16	26.99	34.7	42.2	17.0	18.0	16.0
DGA 8-G4	1/2	12.7	1/4	10.4	13/16	20.64	31.9	42.2	13.0	14.0	12.0
DGA 8-G6	1/2	12.7	3/8	10.4	7/8	22.23	33.7	44.0	15.0	16.0	14.0
DGA 8-G8	1/2	12.7	1/2	10.4	1-1/16	26.99	35.7	46.0	17.0	18.0	16.0
DGA 12-G4	3/4	19.05	1/4	12.7	1-1/16	26.99	34.7	45.0	13.0	14.0	12.0
DGA 12-G6	3/4	19.05	3/8	12.7	1-1/16	26.99	36.7	47.0	15.0	16.0	14.0
DGA 12-G8	3/4	19.05	1/2	12.7	1-1/16	26.99	38.7	49.0	17.0	18.0	16.0

<b>BI-LoK</b>	<b>DGB</b>	<b>Bulkhead Gauge Connector</b> Connects fractional tube to ISO parallel thread
---------------	------------	--



H : See dimensional data(Last page)

Part No.	A(Tube O. D)		T	E	E <sub>1</sub>	h(HEX)	h <sub>1</sub> (HEX)	L	ℓ	L <sub>1</sub>	ℓ <sub>1</sub>	G	F	Panel	K	
	in	mm	G	mm	mm	in	in	mm	mm	mm	mm	mm	mm	Hole Thic	mm	
DGB 6-G6	3/8	9.53	3/8	7.1	6.0	7/8	3/4	58.0	50.5	37.0	29.5	15.0	17.0	14.7	11.2	14.0