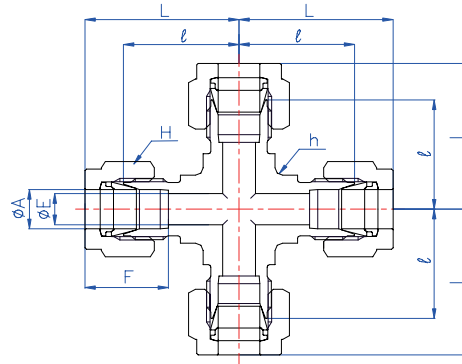
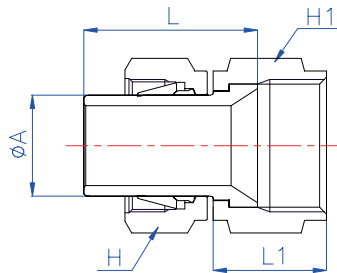


<b>BI-LoK</b>	<b>DXA</b>	<b>Union Cross</b> Connects fractional tubes
---------------	------------	---



Part No.	A (Tube O. D)		E	h (Flat)		H (HEX)		l	L	F
	in	mm		in	mm	in	mm			
DXA 1	1/16	1.59	1.3	3/8	9.5	5/16	7.94	14.2	18.2	8.9
DXA 2	1/8	3.18	2.3	3/8	9.5	7/16	11.11	15.8	22.5	13.0
DXA 3	3/16	4.76	3.0	1/2	12.7	1/2	12.7	19.0	25.7	13.8
DXA 4	1/4	6.35	4.8	1/2	12.7	9/16	14.29	20.0	27.5	15.4
DXA 5	5/16	7.94	6.4	5/8	15.9	5/8	15.88	22.4	29.9	16.3
DXA 6	3/8	9.53	7.1	5/8	15.9	11/16	17.46	23.0	30.5	17.0
DXA 8	1/2	12.7	10.4	13/16	20.6	7/8	22.23	25.0	35.3	23.0
DXA 10	5/8	15.88	12.7	15/16	23.8	1	25.4	27.0	37.3	24.6
DXA 12	3/4	19.05	15.8	1-1/16	27.0	1-1/8	28.58	28.2	38.5	24.6
DXA 16	1	25.4	22.5	1-3/8	34.9	1-1/2	38.1	33.3	45.9	31.6

<b>BI-LoK</b>	<b>DAN</b>	<b>Bi-lok to AN Adapter</b> Connects fractional tube to male 37° flared tube
---------------	------------	---



Part No.	A (Tube O. D)		AN (Tube O. D)		H (HEX)		H <sub>1</sub> (HEX)		L <sub>1</sub>	L <sub>2</sub>
	in	mm	in	mm	in	mm	in	mm		
DAN 2-2	1/8	3.18	1/8	3.18	7/16	11.11	3/8	9.53	19.6	13.8
DAN 4-4	1/4	6.35	1/4	6.35	9/16	14.29	9/16	14.29	22.3	15.7
DAN 6-6	3/8	9.53	3/8	9.53	11/16	17.46	11/16	17.46	25.3	18.3
DAN 8-8	1/2	12.7	1/2	12.7	7/8	22.23	7/8	22.23	32.0	21.3
DAN 16-16	1	25.4	1	25.4	1-1/2	38.1	1-1/2	38.1	43.5	28.4