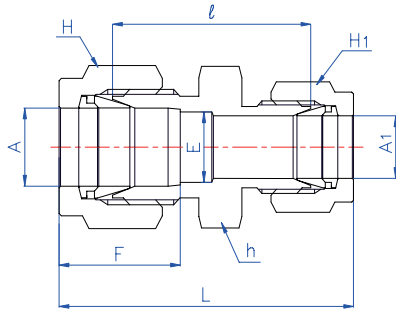


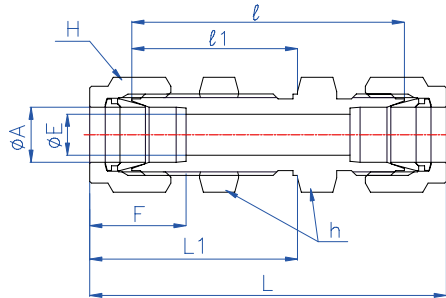
BI-LoK	DURZ	Reducing Union / Bored-through Connects fractional tubes
---------------	-------------	---



H, H₁ : See dimensional data (Last page)

Part No	A (Tube O. D)		A ₁ (Tube O. D)		E	h (HEX)		ℓ	L	F
	in	mm	in	mm	mm	in	mm	mm	mm	mm
DURZ 2-1	1/8	3.18	1/16	1.59	2.3	7/16	11.11	20.6	31.3	13.0
DURZ 4-1	1/4	6.35	1/16	1.59	4.8	1/2	12.7	23.1	34.6	15.4
DURZ 4-2	1/4	6.35	1/8	3.18	4.8	1/2	12.7	24.6	38.8	15.4
DURZ 6-4	3/8	9.53	1/4	6.35	7.1	5/8	15.88	28.4	43.4	17.0
DURZ 8-2	1/2	12.7	1/8	3.18	10.4	13/16	20.64	29.0	49.6	23.0

BI-LoK	DSU	Bulkhead Union Connects fractional tubes
---------------	------------	---



H : See dimensional data (Last page)

Part No.	A (Tube O. D)		E	h (HEX)		ℓ	ℓ ₁	L	L ₁	F	Panel	
	in	mm	mm	in	mm	mm	mm	mm	mm	mm	Hole	Thick
DSU 1	1/16	1.59	1.3	5/16	7.94	24.0	13.5	32.0	17.5	8.9	5.2	3.0
DSU 2	1/8	3.18	2.3	1/2	12.7	38.0	24.6	51.4	31.3	13.0	8.3	12.7
DSU 3	3/16	4.76	3.0	9/16	14.29	40.5	25.5	53.9	32.2	13.8	9.9	12.7
DSU 4	1/4	6.35	4.8	5/8	15.88	43.0	26.0	58.0	33.5	15.4	11.5	10.2
DSU 5	5/16	7.94	6.4	11/16	17.46	46.0	28.5	61.0	36.0	16.3	13.1	10.9
DSU 6	3/8	9.53	7.1	3/4	19.05	47.8	29.5	62.8	37.0	17.0	14.7	11.2
DSU 8	1/2	12.7	10.4	15/16	23.81	50.8	32.0	71.4	42.3	23.0	19.4	12.7
DSU 10	5/8	15.88	12.7	1-1/16	26.99	52.5	32.5	73.1	42.8	24.6	22.6	12.7
DSU 12	3/4	19.05	15.8	1-3/16	30.16	58.7	37.3	79.3	47.6	24.6	25.8	16.8
DSU 16	1	25.4	22.5	1-5/8	41.28	71.4	45.2	96.6	57.8	31.6	33.7	19.1