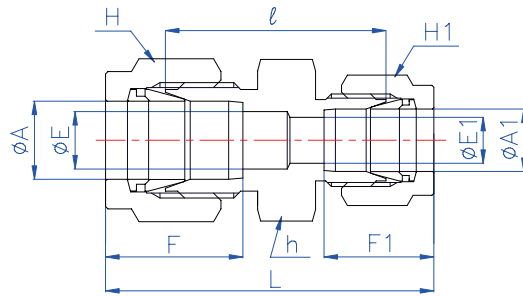


<b>BI-LoK</b>	<b>DUR</b>	<b>Reducing Union Connects fractional tubes</b>
---------------	------------	---



H, H<sub>1</sub> : See dimensional data (Last page)

Part No	A (Tube O. D)		A <sub>1</sub> (Tube O. D)		E	E <sub>1</sub>	h (HEX)		ℓ	L	F	F <sub>1</sub>
	in	mm	in	mm	mm	mm	in	mm	mm	mm	mm	mm
DUR 2-1	1/8	3.18	1/16	1.59	2.3	1.3	7/16	11.11	20.6	31.3	13.0	8.9
DUR 3-1	3/16	4.76	1/16	1.59	3.0	1.3	7/16	11.11	21.6	32.3	13.8	8.9
DUR 3-2	3/16	4.76	1/8	3.18	3.0	2.3	7/16	11.11	23.4	36.8	13.8	13.0
DUR 4-1	1/4	6.35	1/16	1.59	4.8	1.3	1/2	12.7	23.1	34.6	15.4	8.9
DUR 4-2	1/4	6.35	1/8	3.18	4.8	2.3	1/2	12.7	24.6	38.8	15.4	13.0
DUR 4-3	1/4	6.35	3/16	4.76	4.8	3.0	1/2	12.7	25.4	39.6	15.4	13.8
DUR 5-4	5/16	7.94	1/4	6.35	6.4	4.8	9/16	14.29	27.4	42.4	16.3	15.4
DUR 6-1	3/8	9.53	1/16	1.59	7.1	1.3	5/8	15.88	25.4	36.9	17.0	8.9
DUR 6-2	3/8	9.53	1/8	3.18	7.1	2.3	5/8	15.88	27.0	41.2	17.0	13.0
DUR 6-4	3/8	9.53	1/4	6.35	7.1	4.8	5/8	15.88	28.4	43.4	17.0	15.4
DUR 6-5	3/8	9.53	5/16	7.94	7.1	6.4	5/8	15.88	29.5	44.5	17.0	16.3
DUR 8-4	1/2	12.7	1/4	6.35	10.4	4.8	13/16	20.64	29.5	47.3	23.0	15.4
DUR 8-6	1/2	12.7	3/8	9.53	10.4	7.1	13/16	20.64	31.0	48.8	23.0	17.0
DUR 10-6	5/8	15.88	3/8	9.53	12.7	7.1	15/16	23.81	31.8	49.6	24.6	17.0
DUR 10-8	5/8	15.88	1/2	12.7	12.7	10.4	15/16	23.81	31.8	52.4	24.6	23.0
DUR 12-6	3/4	19.05	3/8	9.53	15.8	7.1	1-1/16	26.99	33.3	51.1	24.6	17.0
DUR 12-8	3/4	19.05	1/2	12.7	15.8	10.4	1-1/16	26.99	33.3	53.9	24.6	23.0
DUR 12-10	3/4	19.05	5/8	15.88	15.8	12.7	1-1/16	26.99	33.3	53.9	24.6	24.6
DUR 16-12	1	25.4	3/4	19.05	22.5	15.8	1-3/8	34.93	38.1	61.0	31.6	24.6

<b>BI-LoK</b>	<b>DUR</b>	<b>Reducing Union Connects fractional tube to metric tube</b>
---------------	------------	---

H, H<sub>1</sub> : See dimensional data (Last page)

Part No	A <sub>1</sub> (Tube O. D)		A	E	E <sub>1</sub>	h (HEX)		ℓ	L	F	F <sub>1</sub>
	in	mm	mm	mm	mm	in	mm	mm	mm	mm	mm
DUR 2-4M	1/8	3.18	4	2.3	2.7	7/16	11.11	24.0	37.5	13.0	13.9
DUR 4-4M	1/4	6.35	4	4.8	2.7	1/2	12.7	27.0	41.3	15.4	13.9
DUR 4-6M	1/4	6.35	6	4.8	4.8	9/16	14.29	27.3	42.3	15.4	15.4
DUR 4-8M	1/4	6.35	8	4.8	6.4	11/16	17.46	28.6	43.6	15.4	16.3
DUR 4-10M	1/4	6.35	10	4.8	7.9	3/4	19.05	30.6	45.9	15.4	17.3
DUR 6-6M	3/8	9.53	6	7.1	4.8	5/8	15.88	28.4	43.3	17.0	15.4
DUR 6-8M	3/8	9.53	8	7.1	6.4	5/8	15.88	29.5	44.5	17.0	16.3
DUR 6-10M	3/8	9.53	10	7.1	7.9	3/4	19.05	32.0	47.3	17.0	17.3
DUR 6-12M	3/8	9.53	12	7.1	9.5	13/16	20.64	32.0	49.7	17.0	22.9
DUR 8-6M	1/2	12.7	6	10.4	4.8	13/16	20.64	30.5	48.3	23.0	15.4
DUR 8-10M	1/2	12.7	10	10.4	7.9	13/16	20.64	32.0	50.1	23.0	17.3
DUR 8-12M	1/2	12.7	12	10.4	9.5	13/16	20.64	32.0	52.5	23.0	22.9