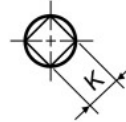
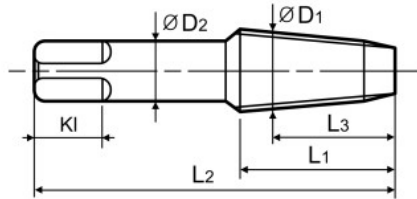


**PT SPIRAL FLUTE TAPER PIPE TAPS for PT THREADS**  
**螺旋槽PT 螺纹用锥管丝锥**

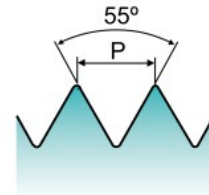
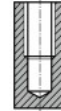
► Suitable for process taper pipe internal threads.  
 PT : Taper pipe threads (for pressure-tight joints)

► 适用于锥管螺纹加工  
 PT : 锥管螺纹 (用于压力密封接头)



Hole type  
孔类型

2.5×D



Material groups: **GS** HSS-E PT JIS II 55° 2.5P R30 Bright p. B200

Recommended ToolHolder	Plain Shank	Page
☉	TAPPING ER CHUCK	D215-220
☉	TAPPING CHUCK	D221-228
☉	ONE STEP TAPPING CHUCK	D211-213

Unit(单位) : mm

SIZE	TPI	EDP No.	Limit	Basic Maj. Dia.	Overall Length	Thread Length	Projection Length	Shank Diameter	Square Size	Square Length	No. of Flute
尺寸	牙距	型号	精度	最大基准直径	全长	螺纹长	基准长度	柄径	方块尺寸	方块长度	槽数
ØD1					L2	L1	L3	ØD2	K	KI	
PT 1/8	- 28	T2518202	JIS II	9.728	55	19	13	8	6	9	3
PT 1/4	- 19	T2518402	JIS II	13.157	62	28	21	11	9	12	3
PT 3/8	- 19	T2518482	JIS II	16.662	65	28	21	14	11	14	3
PT 1/2	- 14	T2518562	JIS II	20.955	80	35	25	18	14	17	4
PT 3/4	- 14	T2518702	JIS II	26.441	85	35	25	23	17	20	4
PT 1"	- 11	T2518782	JIS II	33.249	95	45	32	26	21	24	4

► Refer to p.B233-B238 for recommended tap drill sizes. 参考p.B233-B238 底孔尺寸.

◎ : Excellent (优秀) ○ : Good (良好)

ISO Material Description	P										M				K								
	Non-alloy steel					Low alloy steel					High alloyed steel, and tool steel				Stainless steel				Grey cast iron		Nodular cast iron		Malleable cast iron
VDI 3323	1	2	3	4	5	6	7	8	9	10	11	12	13	14	15	16	17	18	19	20			
HRc	13	13	25	28	32	10	29	32	38	15	35	15	23	10	10	26	3	25					
HB	125	190	250	270	300	180	275	300	350	200	325	200	240	180	180	260	160	250	130	230			
Recommended	◎	◎	○			◎	○			○		○		○			○						

ISO Material Description	N									S							H				
	Aluminum-wrought alloy		Aluminum-cast, alloyed			Copper and Copper Alloys (Bronze / Brass)		Non Metallic Materials		Heat Resistant Super Alloys				Titanium Alloys			Hardened steel	Chilled Cast Iron	Hardened Cast Iron		
VDI 3323	21	22	23	24	25	26	27	28	29	30	31	32	33	34	35	36	37	38	39	40	41
HRc											15	30	25	38	34			55	60	42	55
HB	60	100	75	90	130	110	90	100			200	280	250	350	320	400Rm	1050Rm	550	630	400	550
Recommended	○	○	○			○	○														