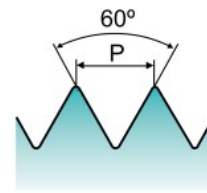
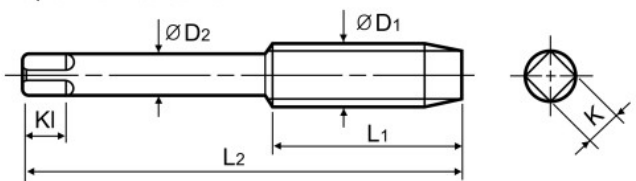
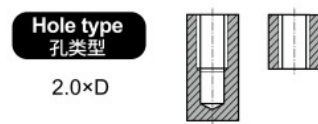


M I-SP HAND TAPS(SET of 3 PIECES)
I-SP 手用丝锥(一套3支)

▶ This tap is a serial hand tap in set, Taper, Plug and Bottoming.

▶ 这丝锥是手丝锥的一套 (头锥 / 中锥 / 底锥)



Material groups: **GS** HSS HT JIS II 60° 1.5P/5.0P/9.0P Bright

Recommended ToolHolder: Plain Shank Page TAPPING ER CHUCK D215-220 TAPPING CHUCK D221-228 ONE STEP TAPPING CHUCK D211-213

Unit(单位) : mm

SIZE	Pitch	EDP No.	Limit	Overall Length	Thread Length	Shank Diameter	Square Size	Square Length	No. of Flute
尺寸	牙距	型号	精度	全长	螺纹长	柄径	方块尺寸	方块长度	槽数
ØD1	P			L2	L1	ØD2	K	KI	
M2	× 0.4	T7099139	JIS II	40	15	3	2.5	5	3
M2.2	× 0.45	T7099159	JIS II	42	15	3	2.5	5	3
M2.3	× 0.4	T7099199	JIS II	42	15	3	2.5	5	3
M2.5	× 0.45	T7099179	JIS II	44	16	3	2.5	5	3
M2.6	× 0.45	T7099499	JIS II	44	16	3	2.5	5	3
M3	× 0.5	T7099209	JIS II	46	18	4	3.2	6	3
M3	× 0.35	T7099219	JIS II	46	18	4	3.2	6	3
M3.5	× 0.6	T7099229	JIS II	48	18	4	3.2	6	3
M3.5	× 0.35	T7099239	JIS II	48	18	4	3.2	6	3
M4	× 0.7	T7099249	JIS II	52	20	5	4	7	4
M4	× 0.5	T7099259	JIS II	52	20	5	4	7	4
M4.5	× 0.75	T7099269	JIS II	55	20	5	4	7	4
M4.5	× 0.5	T7099279	JIS II	55	20	5	4	7	4
M5	× 0.8	T7099289	JIS II	60	22	5.5	4.5	7	4
M5	× 0.5	T7099299	JIS II	60	22	5.5	4.5	7	4
M5.5	× 0.5	T7099309	JIS II	60	22	5.5	4.5	7	4
M6	× 1	T7099319	JIS II	62	24	6	4.5	7	4
M6	× 0.75	T7099329	JIS II	62	24	6	4.5	7	4
M6	× 0.5	T7099339	JIS II	62	22	6	4.5	7	4
M7	× 1	T7099349	JIS II	65	26	6.2	5	8	4
M7	× 0.75	T7099359	JIS II	65	26	6.2	5	8	4
M8	× 1.25	T7099369	JIS II	70	30	6.2	5	8	4

▶ Refer to p.B233-B238 for recommended tap drill sizes. 参考p.B233-B238 底孔尺寸.

▶ NEXT PAGE 下页

◎ : Excellent (优秀) ○ : Good (良好)

ISO Material Description	P										M			K						
	Non-alloy steel					Low alloy steel					High alloyed steel, and tool steel			Stainless steel			Grey cast iron		Nodular cast iron	Malleable cast iron
VDI 3323	1	2	3	4	5	6	7	8	9	10	11	12	13	14	15	16	17	18	19	20
HRc		13	25	28	32	10	29	32	38	15	35	15	23	10	10	26	3	25		21
HB	125	190	250	270	300	180	275	300	350	200	325	200	240	180	180	260	160	250	130	230
Recommended	○	○	○	○	○	○	○	○	○	○	○	○	○	○	○	○	○	○	○	○

ISO Material Description	N										S							H			
	Aluminum-wrought alloy		Aluminum-cast, alloyed			Copper and Copper Alloys (Bronze / Brass)			Non Metallic Materials		Heat Resistant Super Alloys					Titanium Alloys		Hardened steel	Chilled Cast Iron	Hardened Cast Iron	
VDI 3323	21	22	23	24	25	26	27	28	29	30	31	32	33	34	35	36	37	38	39	40	41
HRc											15	30	25	38	34			55	60	42	55
HB	60	100	75	90	130	110	90	100			200	280	250	350	320	400Rm	1050Rm	550	630	400	550
Recommended	○	○	○	○	○	○	○	○	○	○	○	○	○	○	○	○	○	○	○	○	○