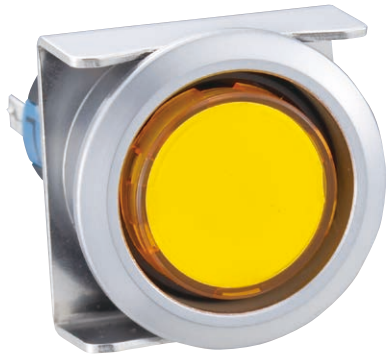


ø16 Switches & Pilot Lights

# A6 Series



Light duty in short 22 mm body length. Flush bezel accessories can be used to change A6 series to Flush Silhouette switches.



• See website for details on approvals and standards.

Suitable for a wide variety of office and factory applications.

Features IDEC's original mechanism for snap-action switching.

The LED lamp contains a current-limiting resistor and a diode for protection against reverse connection.

Degree of protection: IP40 and IP65 (IEC 60529)

## Standard Bezel

[ Bezel size ] [ From panel front ] [ Shape ] [ Contact rating ] [ Action ] [ Operating stroke ]  
**A6** ø18 □18 18×24 9 mm Unibody 3A Light 3 mm  
 SERIES

<b>Illuminated Pushbuttons</b>	<b>Pushbuttons</b>	<b>Pilot Lights</b>	<b>Selector Switches</b>	<b>Key Selector Switches</b>

## Flush Bezel

[ Bezel size ] [ From panel front ] [ Shape ] [ Contact rating ] [ Action ] [ Operating stroke ]  
**A6** ø24 □24 18×24 2 mm Unibody 3A Light 3 mm  
 SERIES

Flush bezel accessories provide a sleek updated look. Enables downsizing of equipment.

<b>Illuminated Pushbuttons</b>	<b>Pushbuttons</b>	<b>Pilot Lights</b>	<b>Selector Switches</b> Unibody	<b>Key Selector Switches</b>