

T-슬롯 용 너트 • DIN 508

EH 23010.



제품 설명

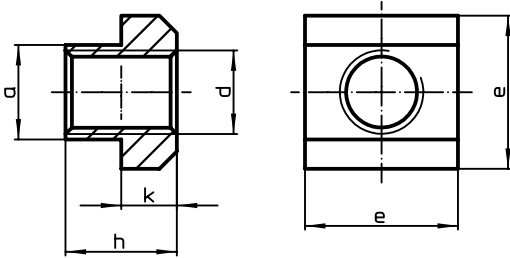
재질

- 열처리 스틸, 재질 8, 밝은색
- 열처리 스틸, 열처리, 재질 10, 흑색 처리
- 스테인레스 스틸 1.4301

조립

T-너트의 로딩력은 T-너트 전체 길이에 대해 조여질 때만 적용 됨.

그림



주문 정보

T-슬롯 사이즈 [mm]	d	a	치수 [mm]			T-슬롯용 DIN 650 [mm]	DIN 508에 대한 테스트 팅력 F 최소 [kN]	[g]	부품번호.		
			e	h	k				열처리 스틸, 재질 8, 밝은색	열처리 스틸, 열처리, 재질 10, 흑색 처리	스테인레스 스틸 1.4301
5	M 4	4,6	9	6,5	3	5	7,0	2,3	23010.0051	23010.0052	-
6	M 5	5,6	10	8,0	4	6	11,4	3,4	23010.0061	23010.0062	-
8	M 6	7,6	13	10,0	6	8	16,0	8,3	23010.0081	23010.0082	23010.0721
10	M 6	9,6	15	12,0	6	10	16,0	14,0	23010.0103 <sup>1)</sup>	23010.0104 <sup>1)</sup>	-
	M 8	9,6	15	12,0	6	10	29,0	13,0	23010.0101	23010.0102	23010.0731
12	M 8	11,6	18	14,0	7	12	29,0	23,0	23010.0123 <sup>1)</sup>	23010.0124 <sup>1)</sup>	-
	M10	11,6	18	14,0	7	12	46,0	20,0	23010.0121	23010.0122	23010.0741
14	M 8	13,6	22	16,0	8	14	29,0	41,0	-	23010.0145 <sup>1)</sup>	-
	M10	13,6	22	16,0	8	14	46,0	37,0	23010.0143 <sup>1)</sup>	23010.0144 <sup>1)</sup>	-
	M12	13,6	22	16,0	8	14	67,0	34,0	23010.0141	23010.0142	23010.0751
16	M 8	15,6	25	18,0	9	16	29,0	62,0	-	23010.0166 <sup>1)</sup>	-
	M10	15,6	25	18,0	9	16	46,0	59,0	-	23010.0165 <sup>1)</sup>	-
	M12	15,6	25	18,0	9	16	67,0	54,0	23010.0163 <sup>1)</sup>	23010.0164 <sup>1)</sup>	-
	M14	15,6	25	18,0	9	16	-	49,0	23010.0161 <sup>1)</sup>	23010.0162 <sup>1)</sup>	23010.0761 <sup>1)</sup>
18	M 8	17,6	28	20,0	10	18	29,0	89,0	-	23010.0187 <sup>1)</sup>	-
	M10	17,6	28	20,0	10	18	46,0	85,0	-	23010.0186 <sup>1)</sup>	-
	M12	17,6	28	20,0	10	18	67,0	80,0	-	23010.0185 <sup>1)</sup>	-
	M14	17,6	28	20,0	10	18	-	74,0	23010.0183 <sup>1)</sup>	23010.0184 <sup>1)</sup>	-
	M16	17,6	28	20,0	10	18	128,0	68,0	23010.0181	23010.0182	23010.0781
20	M12	19,6	32	24,0	12	20	67,0	131,0	-	23010.0205 <sup>1)</sup>	-
	M16	19,6	32	24,0	12	20	128,0	116,0	23010.0203 <sup>1)</sup>	23010.0204 <sup>1)</sup>	-
	M18	19,6	32	24,0	12	20	-	108,0	23010.0201 <sup>1)</sup>	23010.0202 <sup>1)</sup>	-
22	M12	21,6	35	28,0	14	22	67,0	189,0	-	23010.0225 <sup>1)</sup>	-
	M16	21,6	35	28,0	14	22	128,0	175,0	-	23010.0226 <sup>1)</sup>	-
	M18	21,6	35	28,0	14	22	-	163,0	23010.0223 <sup>1)</sup>	23010.0224 <sup>1)</sup>	-
	M20	21,6	35	28,0	14	22	196,0	149,0	23010.0221	23010.0222	-
24	M16	23,6	40	32,0	16	24	128,0	262,0	-	23010.0246 <sup>1)</sup>	-
	M20	23,6	40	32,0	16	24	196,0	237,0	23010.0243 <sup>1)</sup>	23010.0244 <sup>1)</sup>	-
	M22	23,6	40	32,0	16	24	-	221,0	23010.0241 <sup>1)</sup>	23010.0242 <sup>1)</sup>	-
28	M16	27,6	44	36,0	18	28	128,0	375,0	-	23010.0286 <sup>1)</sup>	-
	M20	27,6	44	36,0	18	28	196,0	360,0	-	23010.0284 <sup>1)</sup>	-
	M22	27,6	44	36,0	18	28	-	333,0	-	23010.0283 <sup>1)</sup>	-
	M24	27,6	44	36,0	18	28	282,0	330,0	23010.0281	23010.0282	-
32	M27	31,5	50	40,0	20	32	-	460,0	-	23010.0322 <sup>1)</sup>	-
36	M24	35,5	54	44,0	22	36	282,0	600,0	-	23010.0364 <sup>1)</sup>	-
	M30	35,5	54	44,0	22	36	448,0	585,0	23010.0361	23010.0362	-
42	M36	41,5	65	52,0	26	42	653,0	1000,0	23010.0421	23010.0422	-
48	M42	47,5	75	60,0	30	48	653,0	1500,0	23010.0481	23010.0482	-
54	M48	53,4	85	70,0	34	54	653,0	2100,0	23010.0541	23010.0542	-

<sup>1)</sup> 이 치수들은 DIN 규격이 아님.