

스윙 볼트 • DIN 444, B 형
EH 22980.



제품 설명

스윙 볼트는 DIN 444와 유사. 고 품질 8.8의 스틸 디자인. 스텐레스 스틸 A2-50은 최소 500 N/mm²의 인장력을 지님.

재질

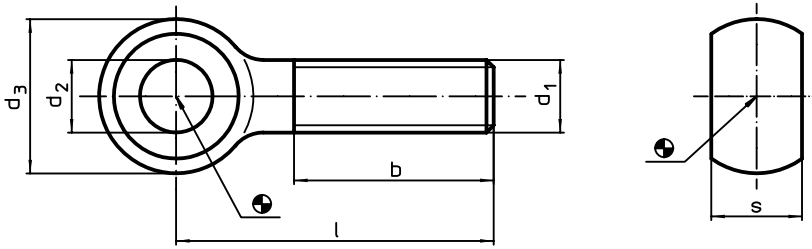
- 열처리 스틸, 열처리, 재질 8.8, 흑색
- 스텐레스 스틸 1.4301

더 많은 정보

참조

시작 토크는 부록 - 기술 자료 - 참조

그림



주문 정보

d ₁	l	치수			b	s	[g]	부품번호.	
		d ₂ H9	d ₃	[mm]				열처리 스틸	스텐레스 스틸
M 5	25	5	12	16	6	5,6	22980.0202	22980.0402	
	30	5	12	16	6	6,4	22980.0203	22980.0403	
	35	5	12	16	6	7,1	22980.0204	22980.0404	
	40	5	12	16	6	7,9	22980.0205	22980.0405	
M 6	30	6	14	18	7	9,5	22980.0212	22980.0412	
	40	6	14	18	7	12,0	22980.0214	22980.0414	
	50	6	14	18	7	14,0	22980.0216	22980.0416	
	60	6	14	18	7	16,0	22980.0218	22980.0418	
	80	6	14	18	7	20,0	22980.0222	22980.0422	
M 8	40	8	18	22	9	22,0	22980.0232	22980.0432	
	50	8	18	22	9	25,0	22980.0234	22980.0434	
	60	8	18	22	9	29,0	22980.0236	22980.0436	
	80	8	18	22	9	37,0	22980.0240	22980.0440	
	100	8	18	22	9	44,0	22980.0244	22980.0444	
M10	50	10	20	26	12	37,0	22980.0252	22980.0452	
	60	10	20	26	12	43,0	22980.0254	22980.0454	
	75	10	20	26	12	52,0	22980.0257	22980.0457	
	100	10	20	26	12	67,0	22980.0262	22980.0462	
	120	10	20	26	12	72,0	22980.0266	22980.0466	
M12	50	12	25	30	14	59,0	22980.0272	22980.0472	
	60	12	25	30	14	68,0	22980.0274	22980.0474	
	80	12	25	30	14	85,0	22980.0278	22980.0478	
	100	12	25	30	14	102,0	22980.0282	22980.0482	
	120	12	25	30	14	119,0	22980.0286	22980.0486	
M16	60	16	32	38	17	128,0	22980.0292	22980.0492	
	80	16	32	38	17	158,0	22980.0294	22980.0494	
	100	16	32	38	17	190,0	22980.0298	22980.0498	
	120	16	32	38	17	220,0	22980.0302	22980.0502	
	150	16	32	44	17	265,0	22980.0308	22980.0508	
M20	100	18	40	46	22	329,0	22980.0312	22980.0512	
	120	18	40	46	22	371,0	22980.0316	22980.0516	
	160	18	40	52	22	466,0	22980.0324	22980.0524	
	200	18	40	52	22	562,0	22980.0332	22980.0532	
M24	100	22	45	54	25	442,0	22980.0342	22980.0542	
	120	22	45	54	25	512,0	22980.0346	22980.0546	
	160	22	45	60	25	649,0	22980.0354	22980.0554	
	200	22	45	60	25	787,0	22980.0362	22980.0562	