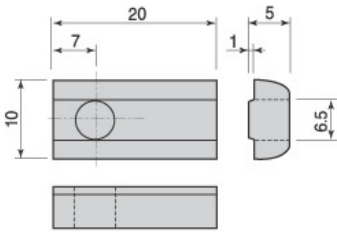


## ■ 30 INSERT NUT



### I Technical Data I

- 재 질 : SS41
- 표 면 : 아연(Z), 니켈(N), 무전해니켈(E)

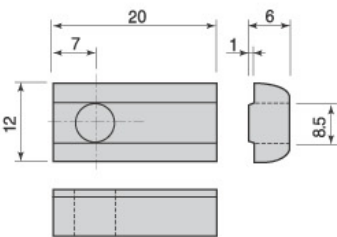
### I Application I

- 프레임 홈에 삽입하여 체결시 사용

Name	Model	Weight	Applied Frame
Insert Nut	I30N4	7g/EA	30 Frame
Insert Nut	I30N5	7g/EA	30 Frame
Insert Nut	I30N6	7g/EA	30 Frame

※ 주문 예) : I30N6(N)

## ■ 40 INSERT NUT



### I Technical Data I

- 재 질 : SS41
- 표 면 : 아연(Z), 니켈(N), 무전해니켈(E)

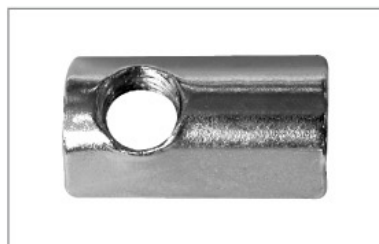
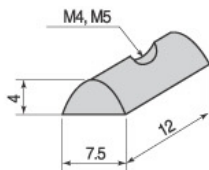
### I Application I

- 프레임 홈에 삽입하여 체결시 용이

Name	Model	Weight	Applied Frame
Insert Nut	I40N4	9g/EA	40 Frame
Insert Nut	I40N5	9g/EA	40 Frame
Insert Nut	I40N6	9g/EA	40 Frame
Insert Nut	I40N8	9g/EA	40 Frame

※ 주문 예) : I40N8(N)

## ■ 20 반달 INSERT NUT



### I Technical Data I

- 재 질 : SS41
- 표 면 : 니켈(N)

Name	Model	Weight	Applied Frame
Insert Nut	I20N4	2g/EA	20 Frame
Insert Nut	I20N5	2g/EA	20 Frame

※ 주문 예) : I20N5