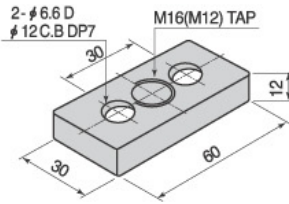
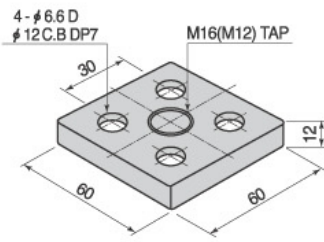


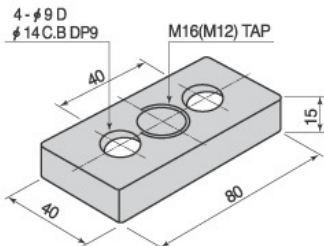
■ STEEL 저가형 FOOT BASE



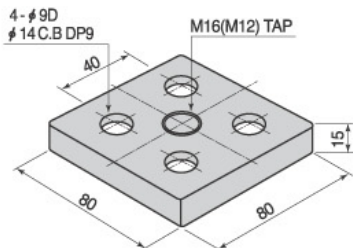
SFP6030



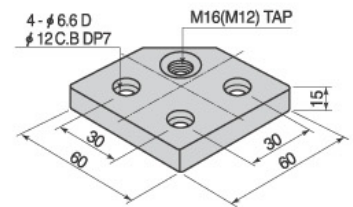
SFP6060



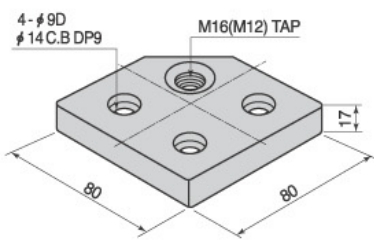
SFP8040



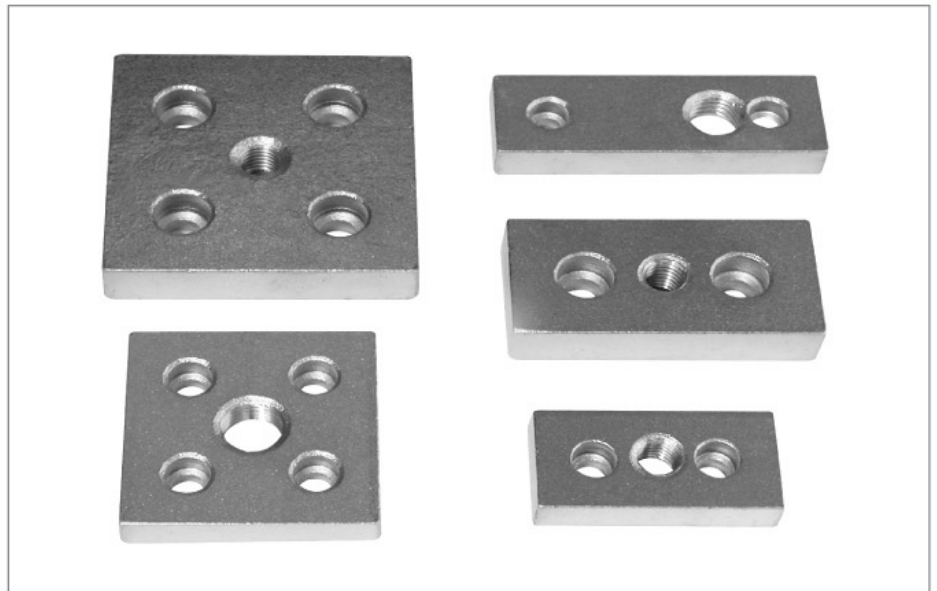
SFP8080



C-SFP6060



C-SFP8080



I Technical Data I

- 재 질 : Steel
- 허용하중 : 500kgf/EA
- 표 면 : 백색아연(Z)

I Application I

- 조절좌를 부착하기전에 Frame 단면에 부착하여 중량형의 하중을 지지할 수 있는 Foot Base으로 활용하는 제품

Name	Model	Weight	Applied Frame
Steel Foot Base	SFP6030-M12,M16	100g/EA	6030 Frame
Steel Foot Base	SFP6060-M12,M16	200g/EA	6060 Frame
Steel Foot Base	SFP8040-M12,M16	320g/EA	8040 Frame
Steel Foot Base	SFP8080-M12,M16	670g/EA	8080 Frame
코너용 Foot Base	C-SFP6060-M12,M16	180g/EA	6060 Frame
코너용 Foot Base	C-SFP8080-M12,M16	620g/EA	8080 Frame

※ 주문 예) : SFP8040-M16