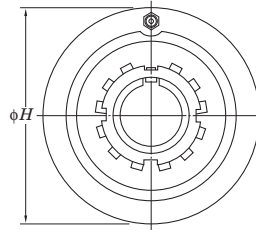
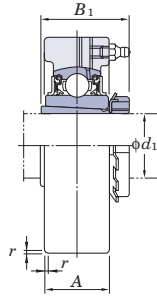


UKC
Tapered bore (with adapter)
 d_1 20 ~ (50) mm



Shaft Dia. mm inch	Dimensions inch mm				Unit No.	Housing No.	Bearing No.	Basic Load Ratings kN		Factor f_0	Adapter No.	Mass kg	
	d_1	H	A	r				B_1	C_r				C_{0r}
20	3/4	3.150	55/64	0.06	1 3/8	UKC205	C205	UK205	14.0	7.85	13.9	HE2305X H2305X	0.7
		80	22	1.5	35	UKCX05	CX05	UKX05	19.5	11.3	13.9	HE2305X H2305X	0.99
	3/4	3.543	1 1/16	0.06	1 3/8	UKC305	C305	UK305	21.2	10.9	12.6	HE2305X H2305X	1.6
25	1	3.346	1 1/16	0.06	1 1/2	UKC206	C206	UK206	19.5	11.3	13.9	H2306X HE2306X	0.89
		85	27	1.5	38	UKCX06	CX06	UKX06	25.7	15.4	13.9	H2306X HE2306X	1.3
	1	3.937	1 3/16	0.08	1 1/2	UKC306	C306	UK306	26.7	15.0	13.3	H2306X HE2306X	1.8
30	1 1/8	3.543	1 7/64	0.08	1 11/16	UKC207	C207	UK207	25.7	15.4	13.9	HS2307X H2307X	1.0
		90	28	2	43	UKCX07	CX07	UKX07	29.1	17.8	14.0	HS2307X H2307X	1.8
	1 1/8	4.331	1 11/32	0.08	1 11/16	UKC307	C307	UK307	33.4	19.3	13.2	HS2307X H2307X	2.2
35	1 1/4	3.937	1 3/16	0.08	1 13/16	UKC208	C208	UK208	29.1	17.8	14.0	HE2308X HS2308X H2308X	1.5
		100	30	2	46	UKCX08	CX08	UKX08	34.1	21.3	14.0	HE2308X HS2308X H2308X	2.4
	1 3/8	4.724	1 1/2	0.08	1 13/16	UKC308	C308	UK308	40.7	24.0	13.2	HE2308X HS2308X H2308X	2.2
40	1 1/2	4.331	1 7/32	0.08	1 31/32	UKC209	C209	UK209	34.1	21.3	14.0	HE2309X H2309X	1.8
		110	31	2	50	UKCX09	CX09	UKX09	35.1	23.3	14.4	HE2309X H2309X	2.4
	1 1/2	5.118	1 1/2	0.12	1 31/32	UKC309	C309	UK309	48.9	29.5	13.3	HE2309X H2309X	2.8
45	1 3/4	4.724	1 19/64	0.08	2 5/32	UKC210	C210	UK210	35.1	23.3	14.4	HE2310X H2310X	2.2
		120	33	2	55	UKCX10	CX10	UKX10	43.4	29.4	14.4	HE2310X H2310X	2.9
	1 3/4	5.118	1 37/64	0.1	2 5/32	UKC310	C310	UK310	62.0	38.3	13.2	HE2310X H2310X	3.2
50	1 7/8	4.921	1 3/8	0.1	2 5/16	UKC211	C211	UK211	43.4	29.4	14.4	HS2311X H2311X HE2311X	2.7
		125	35	2.5	59	UKCX11	CX11	UKX11	52.4	36.2	14.4	HS2311X H2311X HE2311X	4.1
	2	5.906	1 21/32	0.1	2 5/16								
2	150	42	2.5	59									

- Remarks
- In Part No. of unit and units with covers, fitting codes follow bore diameter numbers. (See **Table 10.5** in P.62.)
 - Part No. of applicable grease fittings are shown below.
 A-1/4-28UNF 205~213, X05~X12, 305~308
 A-R1/8 309~328
 - In Part No. of unit with adapters and bearing with adapters, Part No. of applicable adapter follow the Part No. shown in the dimensional tables.
 (Example of Part No. : UKC206J + H2306X, UK206 + H2306X)
 - As for the triple seal type product (205 is the double seal type product), suffix code L3 (or L2) follows the Part No. of unit or bearing.
 (Example of Part No. : UKC206JL3 + H2306X, UK206L3 + H2306X)
 - As for the dimensions and forms of applicable bearings and adapters, see the dimensional tables of ball bearing for unit and adapter.