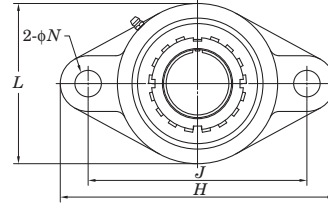
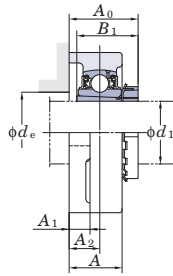


## 2-Bolt Flange Units

### UKFL

#### Tapered bore (with adapter)

$d_1$  20 ~ 50 mm



Shaft Dia. mm inch	$d_1$	Dimensions inch mm										Bolt Size inch mm	Standard		
		H	L	A	J	N	A <sub>1</sub>	A <sub>2</sub>	A <sub>0</sub>	B <sub>1</sub>	$d_e$ (min.)		Unit No.	Housing No.	Bearing No.
20	3/4	5 1/8 130	2 11/16 68	1 1/16 27	3 57/64 99	5/8 16	1/2 13	5/8 16	1 13/32 36	1 3/8 35	1 3/16 30	1/2 M14	UKFL205	FL205	UK205
	3/4	5 9/16 141	3 9/32 83	1 3/16 30	4 39/64 117	15/32 12	1/2 13	45/64 18	1 9/16 39.5	1 3/8 35	1 3/16 30	3/8 M10	UKFLX05	FLX05	UKX05
	3/4	5 29/32 150	3 5/32 80	1 5/32 29	4 29/64 113	3/4 19	1/2 13	5/8 16	1 15/32 37.5	1 3/8 35	—	5/8 M16	UKFL305	FL305	UK305
25	1	5 13/16 148	3 5/32 80	1 7/32 31	4 39/64 117	5/8 16	1/2 13	45/64 18	1 9/16 39.5	1 1/2 38	1 13/32 36	3/8 M14	UKFL206	FL206	UK206
	1	6 5/32 156	3 3/4 95	1 11/32 34	5 1/8 130	5/8 16	9/16 14	3/4 19	1 21/32 42	1 1/2 38	1 13/32 36	3/8 M14	UKFLX06	FLX06	UKX06
	1	7 3/32 180	3 17/32 90	1 1/4 32	5 9/32 134	29/32 23	19/32 15	45/64 18	1 7/8 41	1 1/2 38	—	3/4 M20	UKFL306	FL306	UK306
30	1 1/8	6 11/32 161	3 17/32 90	1 11/32 34	5 1/8 130	5/8 16	9/16 14	3/4 19	1 11/16 43	1 11/16 43	1 5/8 41	3/8 M14	UKFL207	FL207	UK207
	1 1/8	6 23/32 171	4 1/8 105	1 1/2 38	5 43/64 144	5/8 16	9/16 14	53/64 21	1 27/32 47	1 11/16 43	1 5/8 41	3/8 M14	UKFLX07	FLX07	UKX07
	1 1/8	7 9/32 185	3 15/16 100	1 13/32 36	5 35/64 141	29/32 23	5/8 16	25/32 20	1 25/32 45.5	1 11/16 43	—	3/4 M20	UKFL307	FL307	UK307
35	1 1/4	6 7/8 175	3 15/16 100	1 13/32 36	5 43/64 144	5/8 16	9/16 14	53/64 21	1 7/8 48	1 13/16 46	1 13/16 46	3/8 M14	UKFL208	FL208	UK208
	1 1/4	7 1/16 179	4 3/8 111	1 9/16 40	5 53/64 148	5/8 16	9/16 14	55/64 22	1 31/32 50	1 13/16 46	1 13/16 46	3/8 M14	UKFLX08	FLX08	UKX08
	1 1/4	7 7/8 200	4 13/32 112	1 9/16 40	6 7/32 158	29/32 23	21/32 17	29/32 23	2 50.5	1 13/16 46	—	3/4 M20	UKFL308	FL308	UK308
40	1 1/2	7 13/32 188	4 1/4 108	1 1/2 38	5 53/64 148	3/4 19	19/32 15	55/64 22	2 51	1 31/32 50	2 1/16 52	5/8 M16	UKFL209	FL209	UK209
	1 1/2	7 7/16 189	4 9/16 116	1 9/16 40	6 3/16 157	5/8 16	9/16 14	29/32 23	2 1/16 52	1 31/32 50	2 1/16 52	3/8 M14	UKFLX09	FLX09	UKX09
	1 1/2	9 1/16 230	4 29/32 125	1 23/32 44	6 31/32 177	63/64 25	23/32 18	63/64 25	2 5/32 55	1 31/32 50	—	7/8 M22	UKFL309	FL309	UK309
45	1 3/4	7 3/4 197	4 17/32 115	1 9/16 40	6 3/16 157	3/4 19	19/32 15	55/64 22	2 1/16 52	2 5/32 55	2 9/32 58	5/8 M16	UKFL210	FL210	UK210
	1 3/4	8 1/2 216	5 1/4 133	1 23/32 44	7 1/4 184	3/4 19	25/32 20	1 1/32 26	2 9/32 58	2 5/32 55	2 9/32 58	5/8 M16	UKFLX10	FLX10	UKX10
	1 3/4	9 7/16 240	5 1/2 140	1 7/8 48	7 23/64 187	63/64 25	3/4 19	1 7/64 28	2 3/8 60	2 5/32 55	—	7/8 M22	UKFL310	FL310	UK310
50	1 7/8	8 13/16 224	5 1/8 130	1 11/16 43	7 1/4 184	3/4 19	23/32 18	63/64 25	2 1/4 57.5	2 5/16 59	2 17/32 64	5/8 M16	UKFL211	FL211	UK211
	2	9 27/32 250	5 29/32 150	2 1/16 52	7 51/64 198	63/64 25	25/32 20	1 3/16 30	2 17/32 64	2 5/16 59	—	7/8 M22	UKFL311	FL311	UK311

- Remarks
- In Part No. of unit and units with covers, fitting codes follow bore diameter numbers. (See Table 10.5 in P.62.)
  - Part No. of applicable grease fittings are shown below.  
 A-1/4-28UNF ..... 205~210, X05~X09, 305~308  
 A-R1/8..... 211~218, X10, 309~324