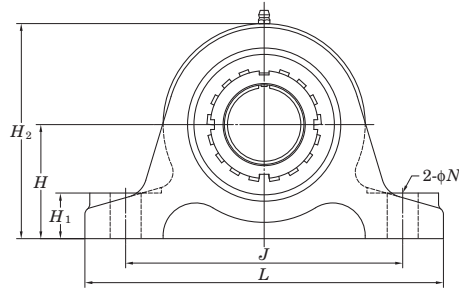
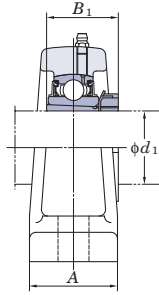


UKIP

Tapered bore (with adapter)

$d_1$  35 ~ 125 mm



Shaft Dia.		Dimensions									Bolt Size	Standard			
mm	inch	inch mm										inch	Unit No.	Housing No.	Bearing No.
$d_1$		H	L	A	J	N	H <sub>1</sub>	H <sub>2</sub>	B <sub>1</sub>	inch					
35	1 1/4	2 23/64	7 7/8	2 3/8	5 29/32	3/4	3 1/32	4 17/32	1 13/16	5/8	UKIP208	IP208	UK208	HE2308X HS2308X H2308X	
	1 3/8	60	200	60	150	19	25	115	46	M16					
40	1 1/2	2 3/4	8 9/32	2 3/8	6 19/64	3/4	3 1/32	5 1/32	1 31/32	5/8	UKIP209	IP209	UK209	HE2309X H2309X	
	70	210	60	160	19	25	128	50	M16						
45	1 3/4	2 3/4	8 21/32	2 3/8	6 11/16	3/4	1 3/32	5 3/16	2 5/32	5/8	UKIP210	IP210	UK210	HE2310X H2310X	
	70	220	60	170	19	28	132	55	M16						
50	1 7/8	3 5/32	9 1/16	2 3/8	7 3/32	3/4	1 3/32	5 13/16	2 5/16	5/8	UKIP211	IP211	UK211	HS2311X H2311X HE2311X	
	2	80	230	60	180	19	28	148	59	M16					
55	2 1/8	3 5/32	10 1/4	2 3/4	7 7/8	7/8	1 3/16	6 3/32	2 7/16	3/4	UKIP212	IP212	UK212	HS2312X H2312X	
	80	260	70	200	22	30	155	62	M20						
60	2 1/4	3 35/64	11 1/32	2 3/4	8 21/32	7/8	1 3/16	6 25/32	2 9/16	3/4	UKIP213	IP213	UK213	HE2313X H2313X HS2313X	
	2 3/8	90	280	70	220	22	30	172	65	M20					
	2 1/4	4 21/64	12 7/32	2 3/4	9 27/32	7/8	1 3/16	8 3/16	2 9/16	3/4					UKIP313
2 3/8	110	310	70	250	22	30	208	65	M20						
65	2 1/2	4 23/32	13 3/8	2 15/16	11 1/32	31/32	1 3/8	9 1/16	2 7/8	7/8	UKIP315	IP315	UK315	HE2315X H2315X	
	120	340	75	280	25	35	230	73	M22						
70	2 3/4	4 23/32	13 25/32	3 11/32	11 27/64	31/32	1 9/16	9 1/4	3 1/16	7/8	UKIP316	IP316	UK316	HE2316X H2316X	
	120	350	85	290	25	40	235	78	M22						
75	3	5 1/8	14 9/16	3 11/32	12 13/64	31/32	1 9/16	10 1/32	3 7/32	7/8	UKIP317	IP317	UK317	H2317X HE2317X	
	130	370	85	310	25	40	255	82	M22						
80	—	5 1/8	15 3/4	3 11/32	13	1 5/32	1 25/32	10 1/4	3 3/8	1	UKIP318	IP318	UK318	H2318X	
	130	400	85	330	29	45	260	86	M27						
85	3 1/4	5 29/32	16 5/32	3 11/32	13 25/64	1 5/32	1 25/32	11 7/32	3 17/32	1	UKIP319	IP319	UK319	HE2319X H2319X	
	150	410	85	340	29	45	285	90	M27						
90	3 1/2	5 29/32	16 15/16	3 11/32	14 11/64	1 5/32	1 25/32	11 5/8	3 13/16	1	UKIP320	IP320	UK320	HE2320X H2320X	
	150	430	85	360	29	45	295	97	M27						
100	—	6 11/16	19 9/32	3 15/16	16 9/64	1 1/4	1 31/32	13 3/16	4 1/8	1 1/8	UKIP322	IP322	UK322	H2322X HE2322X	
	170	490	100	410	32	50	335	105	M30						
110	—	6 11/16	20 3/32	3 15/16	16 59/64	1 1/4	1 31/32	13 19/32	4 13/32	1 1/8	UKIP324	IP324	UK324	H2324	
	170	510	100	430	32	50	345	112	M30						
115	4 1/2	7 7/8	21 21/32	4 11/32	18 1/2	1 1/4	1 31/32	15 11/32	4 3/4	1 1/8	UKIP326	IP326	UK326	HE2326 H2326	
	200	550	110	470	32	50	390	121	M30						
125	—	7 7/8	23 7/32	4 11/32	19 11/16	1 3/8	2 5/32	15 3/4	4 5/32	1 1/4	UKIP328	IP328	UK328	H2328	
	200	590	110	500	35	55	400	131	M33						

- Remarks
1. In Part No. of unit and units with covers, fitting codes follow bore diameter numbers. (See Table 10.5 in P.62.)
  2. Part No. of applicable grease fittings are shown below.  
 A-1/4-28UNF ..... 208~210  
 A-R1/8 ..... 211~213, 313~328