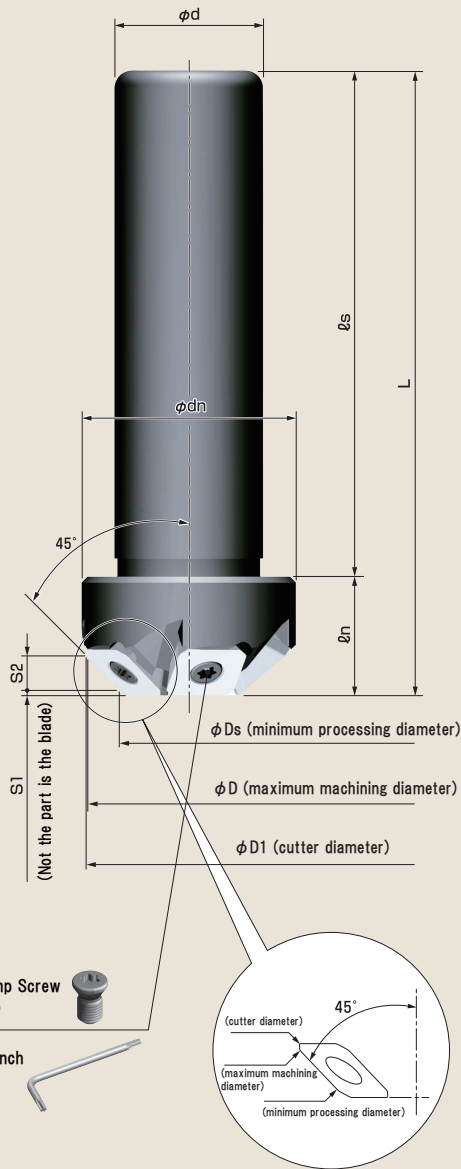
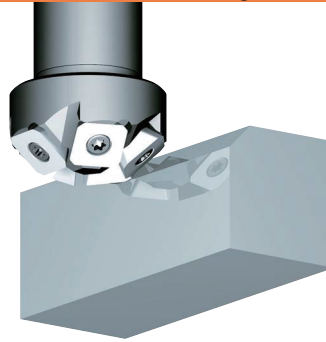


Shortening working time!

● High Speed processing is ensured by the special shape tip



Corner Chamfering



Tip special shape



Body

Model. No.	Blades	Dimensions (mm)									
		ϕD	$\phi D1$	ϕDs	ϕd	ϕdn	L	ℓs	ℓn	S1	S2
KMC25-34S	5	34.9	36.4	24	25	36	105	85	20	1.2	5.3

※ Insert is not equipped as standard accessory. Please purchase it separately
 ※ Clamp screw is equipped as standard accessory

Cutting Conditions

Material	Rotation speed (r.p.m.)	Table feed	Recommended Insert	Coolant
General Steel	2,000~	2,000	S3H3MNZ NK2020	Yes
Alloy Steel	2,000~	2,000	S3H3MNZ NK2020	Yes
Stainless Steel	2,000~	500~1,000	S3H3MNZ AC15D	Yes
Aluminum, Resin, Brass	2,000~	2,000	S3H3GNZ NK1010	Yes
Castings	2,000~	2,000	S3H3GNZ NK1010	Yes

● In case of chamfering process of Stainless steel, kindly take down cutting

Processing Example

[C2 Chamfering]

- Body : KMC25-34S
- Insert : S3H3MNZ AC15D
- Material.....SUS304
- Rotation Speed...5,000r.p.m
- Table feed.....1,500mm/min
- Cutting Depth.....C2
- Cutting Oil.....Yes

Wet Processing



Result

Good !
 No secondary burrs and
 No chattering after processing

Insert

Figure	Model.No.	Material	Blade Shape	Coating	Usable corner	Quantity per box
<p>(Except nose R)</p>	S3H3MNZ NK2001	Cermet	Honing edge	None	4	12
	S3H3GNZ NK1010	Carbide K10	Sharp edge	None	4	12
	S3H3MNZ NK2020	Carbide M20	Honing edge	None	4	12
	S3H3MNZ NK6060	Carbide M20	Honing edge	TiAlN	4	12
	S3H3GNZ NK9090	Carbide K10	Sharp edge	None	4	12
	S3H3MNZ AC15D	Fine particles Carbide	Honing edge	AlCrN	4	12