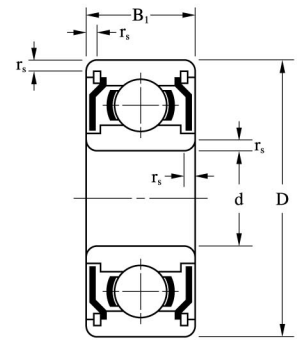
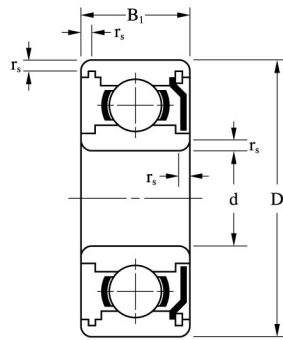
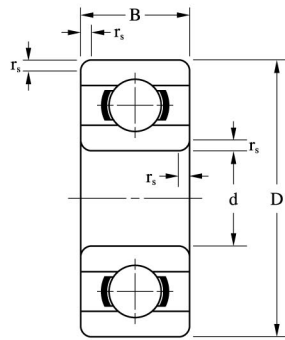
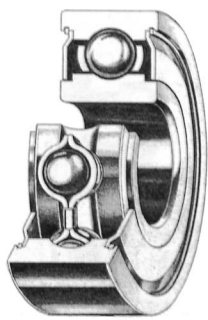


# Metric series ( $0.6 \leq d \leq 4\text{mm}$ )



Bore Diameter: d		Outer Diameter: D		Flange Diameter: Df		Radius: rs(min)		Open Bearings				Seal, Shield Bearings						
								Width: B		Flange Width: Bf		Bearing Reference			Seal			
mm	inch	mm	inch	mm	inch	mm	inch	mm	inch	mm	inch	Open	Flange Open	Shield	Flange Shield	2RS	2RU	TTS
0.6	0.0236	2.5	0.0984	—	—	0.05	0.0020	1.0	0.0394	—	—	68/0.6	—	—	—	—	—	—
1.0	0.0394	3.0	0.1181	3.8	0.1496	0.05	0.0020	1.0	0.0394	0.3	0.0118	681	F681	—	—	—	—	—
		3.0	0.1181	—	—	0.05	0.0020	1.5	0.0591	—	—	MR31	—	—	—	—	—	—
		4.0	0.1575	5.0	0.1969	0.10	0.0039	1.6	0.0630	0.5	0.0197	691	F691	—	—	—	—	—
1.2	0.0472	4.0	0.1575	4.8	0.1890	0.10	0.0039	1.8	0.0709	0.4	0.0157	MR41X	MF41X	MR41XZZ	—	—	—	—
1.5	0.0591	4.0	0.1575	5.0	0.1969	0.05	0.0020	1.2	0.0472	0.4	0.0157	681X	F681X	681XZZ	F681XZZ	—	—	—
		5.0	0.1969	6.5	0.2559	0.15	0.0059	2.0	0.0787	0.6	0.0236	691X	F691X	691XZZ	F691XZZ	—	—	—
		6.0	0.2362	7.5	0.2953	0.15	0.0059	2.5	0.0984	—	—	601X	—	601XZZ	F601XZZ	—	—	—
2.0	0.0787	4.0	0.1575	—	—	0.05	0.0020	1.2	0.0472	—	—	672	—	672ZZ	—	—	—	—
		5.0	0.1969	6.1	0.2402	0.08	0.0031	1.5	0.0591	0.5	0.0197	682	F682	682ZZ	F682ZZ	—	—	—
		5.0	0.1969	6.2	0.2441	0.10	0.0039	2.0	0.0787	0.6	0.0236	MR52	MF52	MR52ZZ	MF52ZZ	—	—	—
		6.0	0.2362	7.5	0.2953	0.15	0.0059	2.3	0.0906	0.6	0.0236	692	F692	692ZZ	F692ZZ	—	—	TTS
		6.0	0.2362	7.2	0.2835	0.15	0.0059	2.5	0.0984	0.6	0.0236	MR62	MF62	MR62ZZ	MF62ZZ	—	—	—
		7.0	0.2756	8.2	0.3228	0.15	0.0059	2.5	0.0984	—	—	MR72	—	MR72ZZS	MF72ZZS	—	—	TTS
2.5	0.0984	7.0	0.2756	8.5	0.3346	0.15	0.0059	2.5	0.0984	—	—	602	—	602ZZS	F602ZZS	—	—	TTS
		8.0	0.3150	—	—	0.20	0.0079	2.5	0.0984	—	—	MR82X	—	—	—	—	—	—
		8.0	0.3150	9.5	0.3740	0.15	0.0059	2.8	0.1102	0.7	0.0276	602X	F602X	602XZZ	F602XZZ	—	—	—
		7.0	0.2756	8.1	0.3189	0.10	0.0039	2.0	0.0787	0.5	0.0197	683	F683	683ZZ	F683ZZ	2RS	2RU	—
3.0	0.1181	6.0	0.2362	7.2	0.2835	0.10	0.0039	2.0	0.0787	0.6	0.0236	MR63	MF63	MR63ZZ	MF63ZZ	—	—	—
		7.0	0.2756	8.1	0.3189	0.10	0.0039	2.0	0.0787	0.5	0.0197	683	F683	683ZZ	F683ZZ	2RS	2RU	—
		7.0	0.2756	8.1	0.3189	0.10	0.0039	3.0	0.1181	0.8	0.0315	—	F683(TTS)	—	—	—	—	TTS
		8.0	0.3150	9.2	0.3622	0.15	0.0059	2.5	0.0984	0.6	0.0236	MR83	MF83	MR83ZZ	MF83ZZ	—	—	—
		8.0	0.3150	9.5	0.3740	0.15	0.0059	3.0	0.1181	0.7	0.0276	693	F693	693ZZ	F693ZZ	2RS	—	—
		9.0	0.3543	10.2	0.4016	0.20	0.0079	2.5	0.0984	0.6	0.0236	MR93	MF93	—	—	—	—	—
		9.0	0.3543	10.6	0.4173	0.15	0.0059	—	—	—	—	—	—	MR93ZZ	MF93ZZ	—	—	—
		9.0	0.3543	10.5	0.4134	0.15	0.0059	3.0	0.1181	0.7	0.0276	603	F603	603ZZ	F603ZZ	—	—	—
		10.0	0.3937	11.5	0.4528	0.15	0.0059	4.0	0.1575	1.0	0.0394	623 <sup>(1)</sup>	F623 <sup>(1)</sup>	623ZZ	F623ZZ	2RS	2RU	TTS
		13.0	0.5118	—	—	0.20	0.0079	5.0	0.1969	—	—	633 <sup>(1)</sup>	—	633ZZ	—	2RS	2RU	—
4.0	0.1575	7.0	0.2756	8.2	0.3228	0.10	0.0039	2.0	0.0787	0.6	0.0236	MR74	MF74	—	—	—	—	—
		7.0	0.2756	8.2	0.3228	0.10	0.0039	—	—	—	—	—	—	MR74ZZ	MF74ZZ	—	—	—
		8.0	0.3150	9.2	0.3622	0.15	0.0059	2.0	0.0787	0.6	0.0236	MR84	MF84	—	—	—	—	—
		8.0	0.3150	9.2	0.3622	0.10	0.0039	—	—	—	—	—	—	MR84ZZ	MF84ZZ	—	—	TTS
		9.0	0.3543	10.3	0.4055	0.10	0.0039	2.5	0.0984	0.6	0.0236	684	F684	684ZZ	F684ZZ	2RS	2RU	TTS
		10.0	0.3937	11.2	0.4409	0.20	0.0079	3.0	0.1181	0.6	0.0236	MR104	MF104	—	—	—	—	—
		10.0	0.3937	11.6	0.4567	0.20	0.0079	—	—	—	—	—	—	MR104ZZ	MF104ZZ	2RS	2RU	—
		11.0	0.4331	12.5	0.4921	0.15	0.0059	4.0	0.1575	1.0	0.0394	694	F694 <sup>(1)</sup>	694ZZ	F694ZZ	2RS	2RU	—
		12.0	0.4724	13.5	0.5315	0.20	0.0079	4.0	0.1575	1.0	0.0394	604 <sup>(1)</sup>	F604 <sup>(1)</sup>	604ZZ	F604ZZ	2RS	2RU	—
13.0	0.5118	15.0	0.5906	0.20	0.0079	5.0	0.1969	1.0	0.0394	624 <sup>(1)</sup>	F624 <sup>(1)</sup>	624ZZ	F624ZZ	2RS	2RU	—		
		16.0	0.6299	18.0	0.7087	0.30	0.0118	5.0	0.1969	1.0	0.0394	634 <sup>(1)</sup>	F634 <sup>(1)</sup>	634ZZ	F634ZZ	2RS	2RU	TTS

1) Open type bearings have shield/seal grooves. 2) Single shield or seal types are also available; suffix Z, RS, RU or TS.  
3) Prefix S or suffix H is added for stainless material type. Load ratings of stainless material types are calculated by Cr×0.85 or Cor×0.80 of SUJ2 material types.