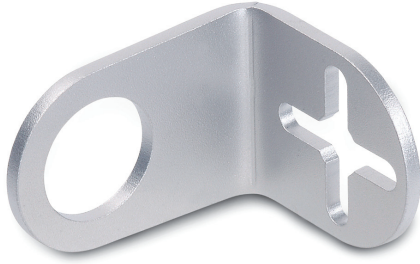


센서 홀더

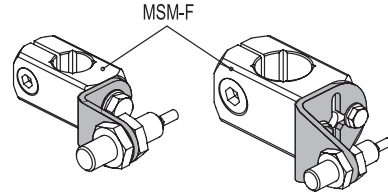


• 재료

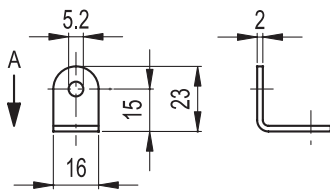
분사 연마를 거친 AISI 304 스테인레스 스틸, 무광택 마감 처리.

특징과 용도

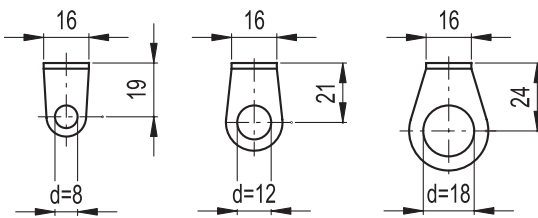
MSM-LA-30 센서 홀더의 경우 십자형 홀이 있어 MSM-F(p. 479 참고) 연결 클램프에 더 정밀하게 조정하여 고정시킬 수 있고 클램핑 나사를 두 개 쓸 수 있다.



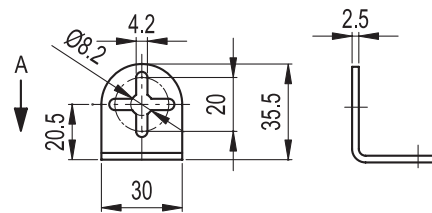
MSM-LA-16



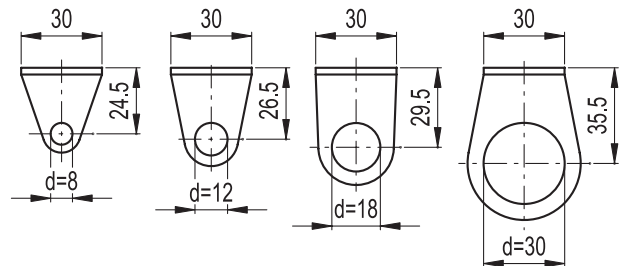
View on A



MSM-LA-30



View on A



Elesa 표준		주요 규격	
코드	설명	d	g
500351	MSM-LA-16-8	8	9
500355	MSM-LA-16-12	12	10
500359	MSM-LA-16-18	18	13
500353	MSM-LA-30-8	8	24
500357	MSM-LA-30-12	12	26
500361	MSM-LA-30-18	18	30
500363	MSM-LA-30-30	30	36