

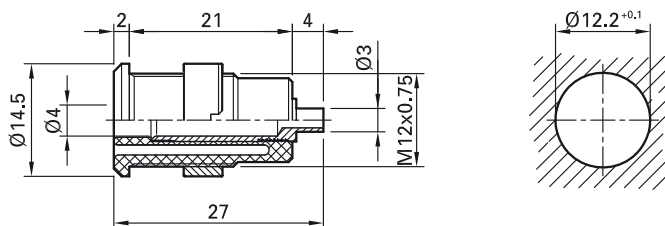
Panel-mount socket SLB4-...

Insulated, rigid, Ø 4 mm, accepting spring-loaded Ø 4 mm plugs with rigid insulating sleeve. Machined brass. The socket

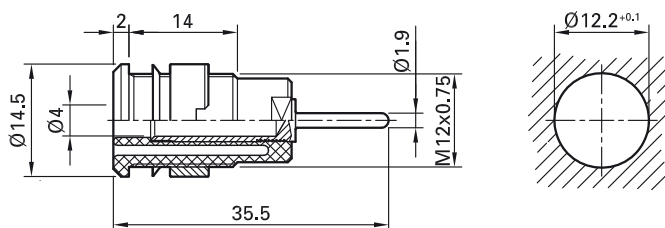
is screwed into pre-drilled panels of plastic, metal, etc.




Connection: Various.

SLB4-E



SLB4-R...



Order No.	Type	Rated voltage/current	Connection		*Standard colors										
49.7049-*	SLB4-E	1000 V, CAT III / 24 A	Solder connection	Ni c  us	<table border="1"> <tr> <td>20</td><td>21</td><td>22</td><td>23</td><td>24</td> </tr> <tr> <td>25</td><td>26</td><td>27</td><td>28</td><td>29</td> </tr> </table>	20	21	22	23	24	25	26	27	28	29
20	21	22	23	24											
25	26	27	28	29											
23.3010-*	SLB4-R	1000 V, CAT III / 24 A	Round connecting pin Ø 1.9 mm	Au c  us	<table border="1"> <tr> <td>20</td><td>21</td><td>22</td><td>23</td><td>24</td> </tr> <tr> <td>25</td><td>26</td><td>27</td><td>28</td><td>29</td> </tr> </table>	20	21	22	23	24	25	26	27	28	29
20	21	22	23	24											
25	26	27	28	29											
49.7048-*	SLB4-R/N-X	1000 V, CAT III / 24 A	Round connecting pin Ø 1.9 mm	Ni c  us	<table border="1"> <tr> <td>20</td><td>21</td><td>22</td><td>23</td><td>24</td> </tr> <tr> <td>25</td><td></td><td></td><td></td><td></td> </tr> </table>	20	21	22	23	24	25				
20	21	22	23	24											
25															

Supplied assembly material

Page 167	MUR/M12x0,75	Round nut for	SLB4-E, SLB4-R, SLB4-R/N-X
Page 167	SSP4	Washer	SLB4-R



Optional colors 26 27 28 29

Further information, page 6



Tube spanners SS2, SS425, page 170



Assembly instructions MA152

www.staubli.com/electrical