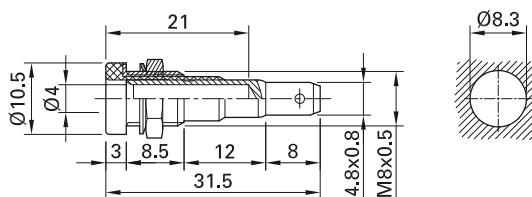
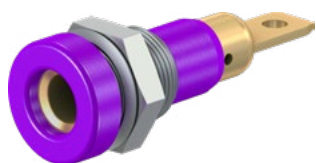


## Panel-mount socket LB-I4R-A

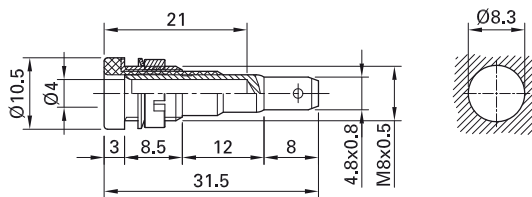
Insulated, Ø 4 mm, rigid. Machined brass.  
Metal thread jacket on the insulation. The socket can be screw-mounted in predrilled panels. Available with hexagonal nut.

**Flat connecting tab 4.8 mm x 0.8 mm.**

### LB-I4R-A



### LB-I4R-A



Order No.	Type	Rated voltage/current	Nut		*Standard colors										
23.0190-*	LB-I4R-A	30 VAC / 25 A 60 VDC / 25 A	Hexagonal nut	Au	<table border="1"> <tr> <td>20</td> <td>21</td> <td>22</td> <td>23</td> <td>24</td> </tr> <tr> <td>25</td> <td>26</td> <td>27</td> <td>28</td> <td>29</td> </tr> </table>	20	21	22	23	24	25	26	27	28	29
20	21	22	23	24											
25	26	27	28	29											
23.0180-*	LB-I4R-A	30 VAC / 25 A 60 VDC / 25 A	Round Nut	Au	<table border="1"> <tr> <td>21</td> <td>22</td> </tr> </table>	21	22								
21	22														

### Component parts

23.6333-*	BI-LB-I4R-A	Socket without nut
Page 166	MU/M8x0,5	Hexagonal Nuts
Page 167	MUR/M8x0,5	Round Nut
Page 167	SP4	Washer



Optional colors 20 23 24 25 26 27 28 29

Further information, page 6



**Flat connecting FSH4,8x0,8, page 170**