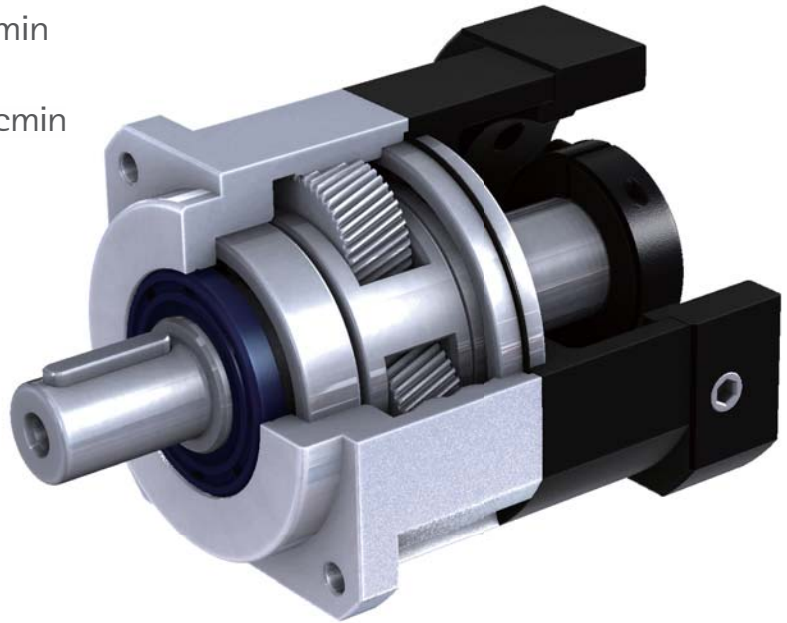


# PGX-H Series

■ 1-Stage Backlash  $\leq$  8 arcmin

■ 2-Stage Backlash  $\leq$  10 arcmin



## Indication of Model Numbers

PGX	90	-	H	-	10	-	Key Type
Type PGX	Model 44 62 90 120 142 180 220		Helical Gear H		Ratio 1-Stage 3, 4, 5, 6, 7, 8, 9, 10 2-Stage 15, 20, 25, 30, 35, 40, 50, 60, 70, 80, 90, 100		Output Shaft Keyway □ : 무표기 Standard (Keyway) N : 표기 Solid Output Shaft (No Keyway)

### 저소음

헬리컬기어 사용으로 부드럽고 조용한 운전가능

### Quiet operation

Helical gears contribute to reduce vibration and noise.

### 고강성과 높은 토크

uncage needle bearing 사용, 강성과 토크를 높임

### High Torque

High output torque is in comparison with spur gear planetary gear reducers.

### 고효율

1-Stage 97%이상, 2-Stage 94%이상

### High Efficiency

Efficiency for 1-Stage model exceeds 97%  
2-Stage model exceeds 94%.