



PL-5510-

PIPE LENGTH

230, 330, 430, 530,  
630, 730, 830, 930**재질**

브라켓 : 아연합금  
파이프 : 알루미늄합금

**표면처리**

브라켓 : 세티라이트 크롬도금  
파이프 : 아노다이징

**중량**

브라켓(1EA) : 238g

**특징**

철도, 반도체장비, 대형 도어 등

**Material**

Bracket : Zinc alloy die-cast  
Pipe : Aluminium alloy

**Finish**

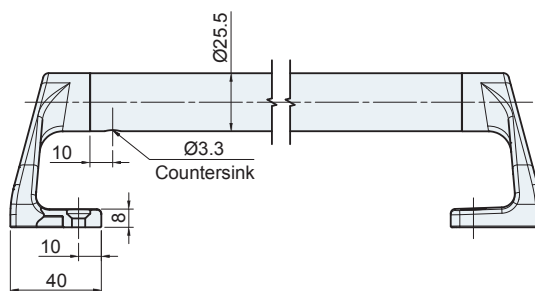
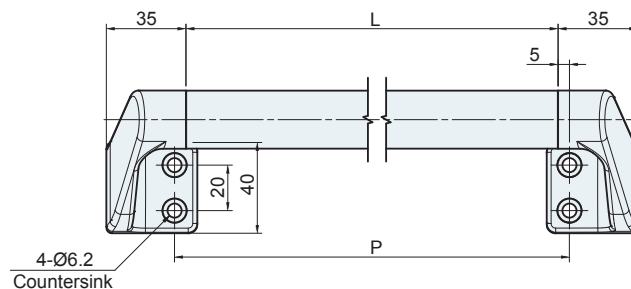
Bracket : Satellite chrome plated  
PULL : Anodizing

**Weight**

Bracket(1EA) : 238g

**Feature**

Railroad, Semiconductor equipment,  
Large doors etc.



	P
PL-5510-230	230
PL-5510-330	330
PL-5510-430	430
PL-5510-530	530
PL-5510-630	630
PL-5510-730	730
PL-5510-830	830
PL-5510-930	930