

## Y Knuckle



■ Table for Y knuckle and cylinder

Cylinder Accessory	SE						SI/SIF								
	32	40	50	63	80	100	32	40	50	63	80	100	125	160	200
F-M10X125Y	●						●								
F-M12X125Y		●						●							
F-M16X150Y			●	●					●	●					
F-M20X150Y					●	●					●	●			
F-M27X200Y							●						●		
F-M36X200Y														●	●

Cylinder Accessory	SGC				SC/SU/SCF/SUF				JSI						
	125	160	200	250	32	40	50	63	32	40	50	63	80	100	125
F-M10X125Y					●					●					
F-M12X125Y						●									
F-M14X150Y											●				
F-M16X150Y							●	●							
F-M18X150Y												●	●		
F-M20X150Y									●	●					
F-M22X150Y														●	
F-M26X150Y															●
F-M27X200Y	●														●
F-M36X200Y		●	●												
F-M42X200Y				●											

Cylinder Accessory	MI				MPG									
	8	10	12	16	20	25	32	40	6	8	10	12	16	
F-M3X050Y													●	
F-M4X070Y	●	●								●	●			
F-M5X080Y												●	●	
F-M6X100Y			●	●										
F-M8X125Y					●									
F-M10X125Y						●	●							
F-M12X125Y								●						

■ Ordering code

**F-M16X150 Y**

Accessories code

Knuckle

Y: Y Knuckle

Screw thread

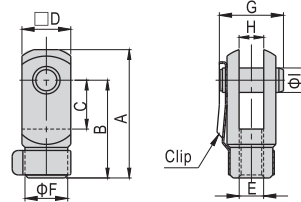
M3: M3
M4: M4
M5: M5
M6: M6
M8: M8
M10: M10
M12: M12
M14: M14
M16: M16
M18: M18
M20: M20
M22: M22
M26: M26
M27: M27
M36: M36
M42: M42

Thread pitch

Screw thread	Thread pitch
M3	050: 0.5mm
M4	070: 0.7mm
M5	080: 0.8mm
M6	100: 1.0mm
M8, M10, M12	125: 1.25mm
M14, M16, M18	150: 1.5mm
M20, M22, M26	
M27, M36, M42	200: 2.0mm

■ Dimensions

M10 and below

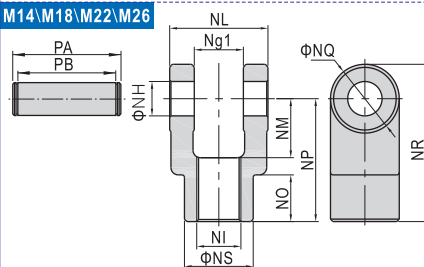


Type/Item	A	B	C	D	F
F-M3X050Y	15.5	12	5	6	6
F-M4X070Y	22	16	8	8	7
F-M5X080Y	28	21	10.2	12	10
F-M6X100Y	32	24	12	12	10
F-M8X125Y	42	32	16	16	14
F-M10X125Y	52	40	20	19	18

Type/Item	E	G	H	I
F-M3X050Y	M3×0.5	9	3	3
F-M4X070Y	M4×0.7	11.5	4	4
F-M5X080Y	M5×0.8	15.5	6.5	5
F-M6X100Y	M6×1.0	16	6	6
F-M8X125Y	M8×1.25	21	8	8
F-M10X125Y	M10×1.25	25	10	10

M14\M18\M22\M26

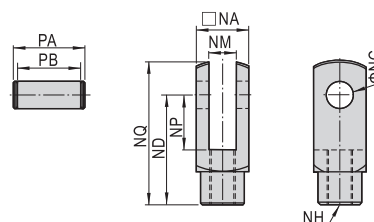


Type/Item	NG1	NH	NI	NL	NM
F-M14X150Y	14.2	10	M14×1.5	27.8	19
F-M18X150Y	20.2	14	M18×1.5	39.8	24
F-M22X150Y	30.2	22	M22×1.5	59.8	34
F-M26X150Y	30.2	22	M26×1.5	59.8	34

Type/Item	NO	NP	NQ	NR	NS	PA	PB
F-M14X150Y	17	40	22	51	22	34.6	28.8
F-M18X150Y	19	50	28	64	28	47	40.8
F-M22X150Y	20	65	40	85	40	69.2	60.8
F-M26X150Y	20	65	40	85	40	69.2	60.8

Others



Type/Item	NA	NC	ND	NP	NQ
F-M12X125Y	25.4	12	48	24	62
F-M16X150Y	32	16	64	32	80
F-M20X150Y	44.4	20	80	40	102
F-M27X200Y	54	30	110	55	139
F-M36X200Y	70	35	144	73	179
F-M42X200Y	85	40	168	86	211

Type/Item	NM	NH	PA	PB
F-M12X125Y	12	M12×1.25	32.4	26.2
F-M16X150Y	16	M16×1.5	39	32.8
F-M20X150Y	20	M20×1.5	53.4	45.2
F-M27X200Y	30	M27×2.0	64.2	54.8
F-M36X200Y	35	M36×2.0	80.2	70.8
F-M42X200Y	40.3	M42×2.0	115	93



Y knuckle

