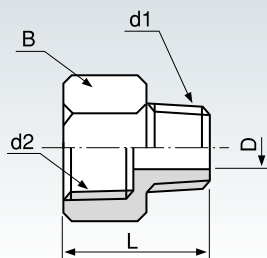


## 内・外ソケット

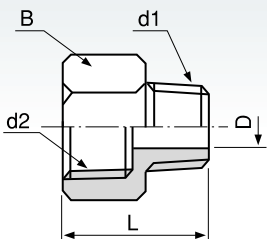
C3604BD



品番	取付ネジ		寸法 (mm)		
	d1	d2	$\phi D$	B	L
NF-1011	PT1/8	PT1/8	5	14	20
NF-1022	PT1/4	PT1/4	8	17	24
NF-1033	PT3/8	PT3/8	11	21	28
NF-1044	PT1/2	PT1/2	13	26	33
NF-1066	PT3/4	PT3/4	18	32	39

## 異径内・外ソケット

C3604BD



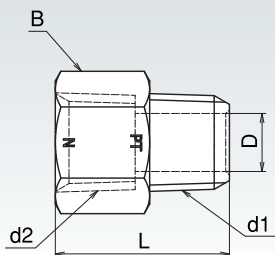
品番	取付ネジ		寸法 (mm)		
	d1	d2	$\phi D$	B	L
NF-1012	PT1/8	PT1/4	5	17	22
NF-1013	PT1/8	PT3/8	5	21	24
NF-1021	PT1/4	PT1/8	5	14	22
NF-1023	PT1/4	PT3/8	8	21	26
NF-1024	PT1/4	PT1/2	8	26	29
NF-1031	PT3/8	PT1/8	5	17	24
NF-1032	PT3/8	PT1/4	8	17	26
NF-1034	PT3/8	PT1/2	11	26	31
NF-1036	PT3/8	PT3/4	11	32	34
NF-1042	PT1/2	PT1/4	8	22	28
NF-1043	PT1/2	PT3/8	11	22	30
NF-1046	PT1/2	PT3/4	13	32	36
NF-1063	PT3/4	PT3/8	11	28	31
NF-1064	PT3/4	PT1/2	13	28	36

NEW

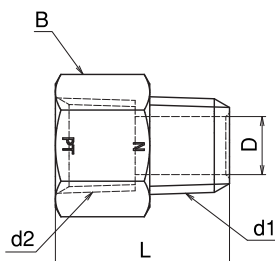
## 変換内・外ソケット

C3604BD

(NF-3000)



(NF-3100)



品番	取付ネジ		寸法 (mm)			
	d1	d2	$\phi D$	B	L	
NF-3011	PT1/8	NPT1/8	5	14	20	R
NF-3022	PT1/4	NPT1/4	8	17	24	R
NF-3033	PT3/8	NPT3/8	11	21	28	R
NF-3044	PT1/2	NPT1/2	13	26	33	R
NF-3066	PT3/4	NPT3/4	18	32	39	R
NF-3088	PT1	NPT1	24	40	48	R
NF-3111	NPT1/8	PT1/8	5	14	20	R
NF-3122	NPT1/4	PT1/4	8	17	24	R
NF-3133	NPT3/8	PT3/8	11	21	28	R
NF-3144	NPT1/2	PT1/2	13	26	33	R
NF-3166	NPT3/4	PT3/4	18	32	39	R
NF-3188	NPT1	PT1	24	40	48	R
NF-3281	1/4-28UNF	PT1/8	2.5	12	20	R
NF-3611	M6×P1.0	PT1/8	2.5	12	20	R

(NF-3281, NF-3611)

RoHS相当品

