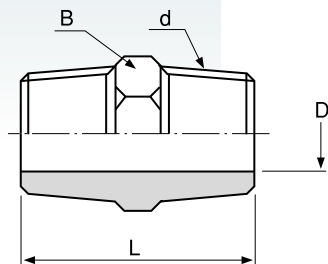


六角ニップル

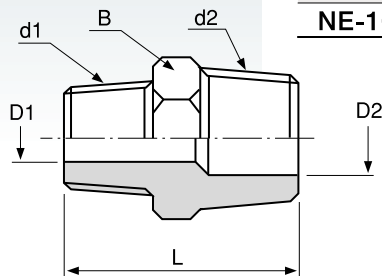
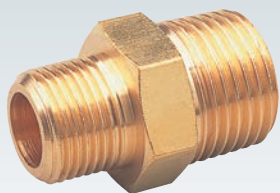
C3604BD



品番	取付ネジ	寸法 (mm)		
	d	ϕD	B	L
NT-1011	PT1/8	5	12	22
NT-1022	PT1/4	8	14	28
NT-1033	PT3/8	11	17	33
NT-1044	PT1/2	13	22	38
NT-1066	PT3/4	18	27	46
NT-1088	PT 1	24	35	53

異径六角ニップル

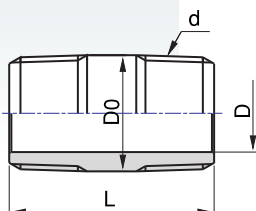
C3604BD



品番	取付ネジ		寸法 (mm)			
	d1	d2	$\phi D1$	$\phi D2$	B	L
NE-1012	PT1/8	PT1/4	5	8	14	26
NE-1013	PT1/8	PT3/8	5	11	17	29
NE-1023	PT1/4	PT3/8	8	11	17	31
NE-1024	PT1/4	PT1/2	8	13	22	34
NE-1034	PT3/8	PT1/2	11	13	22	36
NE-1036	PT3/8	PT3/4	11	18	27	41
NE-1046	PT1/2	PT3/4	13	18	27	43
NE-1048	PT1/2	PT 1	13	24	35	47
NE-1068	PT3/4	PT 1	18	24	35	50

丸ニップル

C3604BD



品番	取付ネジ	寸法 (mm)		
	d	ϕD	$\phi D0$	L
NI-1011	PT1/8	6	10	22
NI-1022	PT1/4	9	14	27
NI-1033	PT3/8	11	17	31
NI-1044	PT1/2	13	21	34
NI-1066	PT3/4	18	27	40
NI-1088	PT 1	24	34	44