

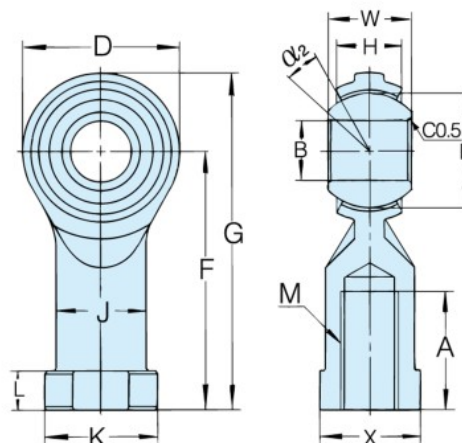
## Female Rod End

### FBF type

- Materials ;  
 Housing - Carbon steel  
           Unichrome plated  
 Ball - High Carbon Chromium  
       Bearing Steel  
 Liner - PTFE resin

### FDF type

- Materials ;  
 Housing - **STAINLESS STEEL**  
           (SUS 303)  
 Ball - **STAINLESS STEEL**  
       (SUS 440C)  
 Liner - PTFE resin



No.	Dimensions mm														Misalignment degrees $\alpha/2$	Minimum Static Fracture Radial Load kN	Maximum Static Load kN		Weight g
	B	W	H	O	D	F	G	A	K	X	J	L	E	M			Radial	Axial	
<b>FBF / FDF 5</b>	5	8	7	7.7	16	27	35	12	11	9	9	4	11.11	M 5×0.8	7	8.6	5.8	2.3	10
<b>FBF / FDF 6</b>	6	9	7	9	18	30	39	13	13	11	10	5	12.7	M 6×1	11	9.8	6.4	2.4	20
<b>FBF / FDF 8</b>	8	12	9	10.4	22	36	47	16	16	14	12.5	5	15.88	M 8×1.25	14	11.8	7.8	2.9	37
<b>FBF / FDF 10</b>	10	14	11	12.9	26	43	56	19	19	17	15	6.5	19.05	M10×1.5	12	15.2	10.3	3.8	61
<b>FBF / FDF 12</b>	12	16	12	15.4	30	50	65	24	22	19	17.5	6.5	22.23	M12×1.75	13	19.1	12.7	4.9	89
<b>FBF / FDF 14</b>	14	19	14	16.9	34	57	74	27	25	22	20	8	25.4	M14×2	14	25	16.7	6.4	135
<b>FBF / FDF 16</b>	16	21	15	19.4	38	64	83	33	27	22	22	8	28.58	M16×2	15	30.9	20.6	7.8	171
<b>FBF / FDF 18</b>	18	23	17	21.9	42	71	92	36	31	27	25	10	31.75	M18×1.5	14	37.2	25	9.3	246
<b>FBF / FDF 20</b>	20	25	18	24.4	46	77	100	40	34	30	27.5	10	34.93	M20×1.5	14	44.1	29.5	10.8	314
<b>FBF / FDF 22</b>	22	28	20	25.8	50	84	109	43	37	32	30	12	38.1	M22×1.5	15	51.9	34.8	13.2	410

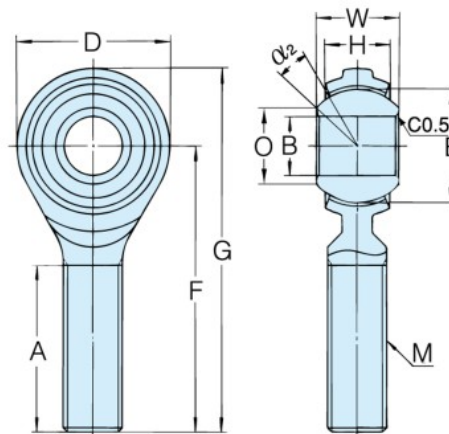
## Male Rod End

### FBM type

- Materials ;  
 Housing - Carbon steel  
           Unichrome plated  
 Ball - High Carbon Chromium  
       Bearing Steel  
 Liner - PTFE resin

### FDM type

- Materials ;  
 Housing - **STAINLESS STEEL**  
           (SUS 303)  
 Ball - **STAINLESS STEEL**  
       (SUS 440C)  
 Liner - PTFE resin



No.	Dimensions mm											Misalignment degrees $\alpha/2$	Minimum Static Fracture Radial Load kN	Maximum Static Load kN		Weight g
	B	W	H	O	D	F	G	A	E	M	Radial			Axial		
<b>FBM / FDM 5</b>	5	8	7	7.7	16	33	41	20	11.11	M 5×0.8	7	3.9	2.4	1	11	
<b>FBM / FDM 6</b>	6	9	7	9	18	36	45	22	12.7	M 6×1	11	5.9	3.9	1.5	15	
<b>FBM / FDM 8</b>	8	12	9	10.4	22	42	53	25	15.88	M 8×1.25	14	10.8	7.4	2.9	30	
<b>FBM / FDM 10</b>	10	14	11	12.9	26	48	61	29	19.05	M10×1.5	12	15.2	10.3	3.9	48	
<b>FBM / FDM 12</b>	12	16	12	15.4	30	54	69	33	22.23	M12×1.75	13	19.1	12.7	4.9	76	
<b>FBM / FDM 14</b>	14	19	14	16.9	34	60	77	36	25.4	M14×2	14	25	16.7	6.4	115	
<b>FBM / FDM 16</b>	16	21	15	19.4	38	66	85	40	28.58	M16×2	15	30.9	20.6	7.8	159	
<b>FBM / FDM 18</b>	18	23	17	21.9	42	72	93	44	31.75	M18×1.5	14	37.2	25	9.3	222	
<b>FBM / FDM 20</b>	20	25	18	24.4	46	78	101	47	34.93	M20×1.5	14	44.1	29.4	11.3	292	
<b>FBM / FDM 22</b>	22	28	20	25.8	50	84	109	51	38.1	M22×1.5	15	52	34.8	13.2	381	

Note : For left-hand thread, add "L" to rod end number (Example : **FBML 5**).  
 For **FDF** & **FDM** types, please check availability.